

ISSN 2518-170X (Online)

ISSN 2224-5278 (Print)



«ҚАЗАҚСТАН РЕСПУБЛИКАСЫ  
ҰЛТТЫҚ ҒЫЛЫМ  
АКАДЕМИЯСЫ» РҚБ

«ҚАЗАҚСТАН РЕСПУБЛИКАСЫ  
ҰЛТТЫҚ ҒЫЛЫМ АКАДЕМИЯСЫ» РҚБ

# Х А Б А Р Л А Р Ы

---

---

## ИЗВЕСТИЯ

РОО «НАЦИОНАЛЬНОЙ  
АКАДЕМИИ НАУК  
РЕСПУБЛИКИ КАЗАХСТАН»

## N E W S

OF THE ACADEMY OF SCIENCES  
OF THE REPUBLIC OF  
KAZAKHSTAN

SERIES

OF GEOLOGY AND TECHNICAL SCIENCES

### 4 (465)

JULY – AUGUST 2024

THE JOURNAL WAS FOUNDED IN 1940

PUBLISHED 6 TIMES A YEAR

ALMATY, NAS RK

*NAS RK is pleased to announce that News of NAS RK. Series of geology and technical sciences scientific journal has been accepted for indexing in the Emerging Sources Citation Index, a new edition of Web of Science. Content in this index is under consideration by Clarivate Analytics to be accepted in the Science Citation Index Expanded, the Social Sciences Citation Index, and the Arts & Humanities Citation Index. The quality and depth of content Web of Science offers to researchers, authors, publishers, and institutions sets it apart from other research databases. The inclusion of News of NAS RK. Series of geology and technical sciences in the Emerging Sources Citation Index demonstrates our dedication to providing the most relevant and influential content of geology and engineering sciences to our community.*

*Қазақстан Республикасы Ұлттық ғылым академиясы «ҚР ҰҒА Хабарлары. Геология және техникалық ғылымдар сериясы» ғылыми журналының Web of Science-тің жаңаланған нұсқасы Emerging Sources Citation Index-те индекстелуге қабылданғанын хабарлайды. Бұл индекстелу барысында Clarivate Analytics компаниясы журналды одан әрі the Science Citation Index Expanded, the Social Sciences Citation Index және the Arts & Humanities Citation Index-ке қабылдау мәселесін қарастыруда. Web of Science зерттеушілер, авторлар, баспашылар мен мекемелерге контент тереңдігі мен сапасын ұсынады. ҚР ҰҒА Хабарлары. Геология және техникалық ғылымдар сериясы Emerging Sources Citation Index-ке енуі біздің қоғамдастық үшін ең өзекті және беделді геология және техникалық ғылымдар бойынша контентке адалдығымызды білдіреді.*

*НАНПК сообщает, что научный журнал «Известия НАНПК. Серия геологии и технических наук» был принят для индексирования в Emerging Sources Citation Index, обновленной версии Web of Science. Содержание в этом индексировании находится в стадии рассмотрения компанией Clarivate Analytics для дальнейшего принятия журнала в the Science Citation Index Expanded, the Social Sciences Citation Index и the Arts & Humanities Citation Index. Web of Science предлагает качество и глубину контента для исследователей, авторов, издателей и учреждений. Включение Известия НАНПК. Серия геологии и технических наук в Emerging Sources Citation Index демонстрирует нашу приверженность к наиболее актуальному и влиятельному контенту по геологии и техническим наукам для нашего сообщества.*

### Бас редактор

**ЖҰРЫНОВ Мұрат Жұрынұлы**, химия ғылымдарының докторы, профессор, ҚР ҰҒА академигі, «Қазақстан Республикасы Ұлттық ғылым академиясы» РҚБ-нің президенті, АҚ «Д.В. Сокольский атындағы отын, катализ және электрохимия институтының» бас директоры (Алматы, Қазақстан) **Н = 4**

### Ғылыми хатшы

**АБСАДЫКОВ Бахыт Нарикбайұлы**, техника ғылымдарының докторы, профессор, ҚР ҰҒА жауапты хатшысы, А.Б. Бектұров атындағы химия ғылымдары институты (Алматы, Қазақстан) **Н = 5**

### Редакциялық алқа:

**ӘБСАМЕТОВ Мәліс Құдысұлы** (бас редактордың орынбасары), геология-минералогия ғылымдарының докторы, профессор, ҚР ҰҒА академигі, «У.М. Ахмедсафина атындағы гидрогеология және геоэкология институтының» директоры (Алматы, Қазақстан) **Н = 2**

**ЖОЛТАЕВ Герой Жолтайұлы** (бас редактордың орынбасары), геология-минералогия ғылымдарының докторы, профессор, Қ.И. Сатпаев атындағы геология ғылымдары институтының директоры (Алматы, Қазақстан) **Н = 2**

**СНОУ Дэниел**, Ph.D, қауымдастырылған профессор, Небраска университетінің Су ғылымдары зертханасының директоры (Небраска штаты, АҚШ) **Н = 32**

**ЗЕЛЪТМАН Реймар**, Ph.D, табиғи тарих мұражайының Жер туралы ғылымдар бөлімінде петрология және пайдалы қазбалар кен орындары саласындағы зерттеулердің жетекшісі (Лондон, Англия) **Н = 37**

**ПАНФИЛОВ Михаил Борисович**, техника ғылымдарының докторы, Нанси университетінің профессоры (Нанси, Франция) **Н = 15**

**ШЕН Пин**, Ph.D, Қытай геологиялық қоғамының тау геологиясы комитеті директорының орынбасары, Американдық экономикалық геологтар қауымдастығының мүшесі (Пекин, Қытай) **Н = 25**

**ФИШЕР Аксель**, Ph.D, Дрезден техникалық университетінің қауымдастырылған профессоры (Дрезден, Берлин) **Н = 6**

**КОНТОРОВИЧ Алексей Эмильевич**, геология-минералогия ғылымдарының докторы, профессор, РҒА академигі, А.А. Трофимука атындағы мұнай-газ геологиясы және геофизика институты (Новосибирск, Ресей) **Н = 19**

**АГАБЕКОВ Владимир Енокович**, химия ғылымдарының докторы, Беларусь ҰҒА академигі, Жаңа материалдар химиясы институтының құрметті директоры (Минск, Беларусь) **Н = 13**

**КАТАЛИН Стефан**, Ph.D, Дрезден техникалық университетінің қауымдастырылған профессоры (Дрезден, Берлин) **Н = 20**

**СЕЙТМҰРАТОВА Элеонора Юсуповна**, геология-минералогия ғылымдарының докторы, профессор, ҚР ҰҒА корреспондент-мүшесі, Қ.И. Сатпаев атындағы Геология ғылымдары институты зертханасының меңгерушісі (Алматы, Қазақстан) **Н = 11**

**САҒЫНТАЕВ Жанай**, Ph.D, қауымдастырылған профессор, Назарбаев университеті (Нұр-Сұлтан, Қазақстан) **Н = 11**

**ФРАТТИНИ Паоло**, Ph.D, Бикокк Милан университеті қауымдастырылған профессоры (Милан, Италия) **Н = 28**

---

**«ҚР ҰҒА» РҚБ Хабарлары. Геология және техникалық ғылымдар сериясы».**

**ISSN 2518-170X (Online),**

**ISSN 2224-5278 (Print)**

Меншіктеуші: «Қазақстан Республикасының Ұлттық ғылым академиясы» РҚБ (Алматы қ.).

Қазақстан Республикасының Ақпарат және қоғамдық даму министрлігінің Ақпарат комитетінде 29.07.2020 ж. берілген № **KZ39VPU00025420** мерзімдік басылым тіркеуіне қойылу туралы куәлік.

Тақырыптық бағыты: *геология, мұнай және газды өңдеудің химиялық технологиялары, мұнай химиясы, металдарды алу және олардың қосындыларының технологиясы.*

Мерзімділігі: жылына 6 рет.

Тиражы: 300 дана.

Редакцияның мекен-жайы: 050010, Алматы қ., Шевченко көш., 28, 219 бөл., тел.: 272-13-19

<http://www.geolog-technical.kz/index.php/en/>

© «Қазақстан Республикасының Ұлттық ғылым академиясы» РҚБ, 2024

---

### **Главный редактор**

**ЖУРИНОВ Мурат Журинович**, доктор химических наук, профессор, академик НАН РК, президент РОО «Национальной академии наук Республики Казахстан», генеральный директор АО «Институт топлива, катализа и электрохимии им. Д.В. Сокольского» (Алматы, Казахстан) **Н = 4**

### **Ученый секретарь**

**АБСАДЫКОВ Бахыт Нарикбаевич**, доктор технических наук, профессор, ответственный секретарь НАН РК, Институт химических наук им. А.Б. Бектурова (Алматы, Казахстан) **Н = 5**

### **Редакционная коллегия:**

**АБСАМЕТОВ Малис Кудысович**, (заместитель главного редактора), доктор геологоминералогических наук, профессор, академик НАН РК, директор Института гидрогеологии и геоэкологии им. У.М. Ахмедсафина (Алматы, Казахстан) **Н = 2**

**ЖОЛТАЕВ Герой Жолтаевич**, (заместитель главного редактора), доктор геологоминералогических наук, профессор, директор Института геологических наук им. К.И. Сатпаева (Алматы, Казахстан) **Н=2**

**СНОУ Дэниел**, Ph.D, ассоциированный профессор, директор Лаборатории водных наук университета Небраски (штат Небраска, США) **Н = 32**

**ЗЕЛЬТМАН Реймар**, Ph.D, руководитель исследований в области петрологии и месторождений полезных ископаемых в Отделе наук о Земле Музея естественной истории (Лондон, Англия) **Н = 37**

**ПАНФИЛОВ Михаил Борисович**, доктор технических наук, профессор Университета Нанси (Нанси, Франция) **Н=15**

**ШЕН Пин**, Ph.D, заместитель директора Комитета по горной геологии Китайского геологического общества, член Американской ассоциации экономических геологов (Пекин, Китай) **Н = 25**

**ФИШЕР Аксель**, ассоциированный профессор, Ph.D, технический университет Дрезден (Дрезден, Берлин) **Н = 6**

**КОНТОРОВИЧ Алексей Эмильевич**, доктор геолого-минералогических наук, профессор, академик РАН, Институт нефтегазовой геологии и геофизики им. А.А. Трофимука СО РАН (Новосибирск, Россия) **Н = 19**

**АГАБЕКОВ Владимир Енокович**, доктор химических наук, академик НАН Беларуси, почетный директор Института химии новых материалов (Минск, Беларусь) **Н = 13**

**КАТАЛИН Стефан**, Ph.D, ассоциированный профессор, Технический университет (Дрезден, Берлин) **Н = 20**

**СЕЙТМУРАТОВА Элеонора Юсуповна**, доктор геолого-минералогических наук, профессор, член-корреспондент НАН РК, заведующая лабораторией Института геологических наук им. К.И. Сатпаева (Алматы, Казахстан) **Н=11**

**САГИНТАЕВ Жанай**, Ph.D, ассоциированный профессор, Назарбаев университет (Нурсултан, Казахстан) **Н = 11**

**ФРАТТИНИ Паоло**, Ph.D, ассоциированный профессор, Миланский университет Бикокк (Милан, Италия) **Н = 28**

---

**«Известия РОО «НАН РК». Серия геологии и технических наук».**

**ISSN 2518-170X (Online),**

**ISSN 2224-5278 (Print)**

Собственник: Республиканское общественное объединение «Национальная академия наук Республики Казахстан» (г. Алматы).

Свидетельство о постановке на учет периодического печатного издания в Комитете информации Министерства информации и общественного развития Республики Казахстан № **KZ39VPY00025420**, выданное 29.07.2020 г.

Тематическая направленность: *геология, химические технологии переработки нефти и газа, нефтехимия, технологии извлечения металлов и их соединений.*

Периодичность: 6 раз в год.

Тираж: 300 экземпляров.

Адрес редакции: 050010, г. Алматы, ул. Шевченко, 28, оф. 219, тел.: 272-13-19

<http://www.geolog-technical.kz/index.php/en/>

© РОО «Национальная академия наук Республики Казахстан», 2024

---

### **Editorial chief**

**ZHURINOV Murat Zhurinovich**, doctor of chemistry, professor, academician of NAS RK, president of the National Academy of Sciences of the Republic of Kazakhstan, general director of JSC “Institute of fuel, catalysis and electrochemistry named after D.V. Sokolsky» (Almaty, Kazakhstan) **H = 4**

### **Scientific secretary**

**ABSADYKOV Bakhyt Narikbaevich**, doctor of technical sciences, professor, executive secretary of NAS RK, Bekturov Institute of chemical sciences (Almaty, Kazakhstan) **H = 5**

### **Editorial board:**

**ABSAMETOV Malis Kudysovich**, (deputy editor-in-chief), doctor of geological and mineralogical sciences, professor, academician of NAS RK, director of the Akhmedsafin Institute of hydrogeology and hydrophysics (Almaty, Kazakhstan) **H=2**

**ZHOLTAEV Geroy Zholtaevich**, (deputy editor-in-chief), doctor of geological and mineralogical sciences, professor, director of the institute of geological sciences named after K.I. Satpayev (Almaty, Kazakhstan) **H=2**

**SNOW Daniel**, Ph.D, associate professor, director of the laboratory of water sciences, Nebraska University (Nebraska, USA) **H = 32**

**ZELTMAN Reyman**, Ph.D, head of research department in petrology and mineral deposits in the Earth sciences section of the museum of natural history (London, England) **H = 37**

**PANFILOV Mikhail Borisovich**, doctor of technical sciences, professor at the Nancy University (Nancy, France) **H=15**

**SHEN Ping**, Ph.D, deputy director of the Committee for Mining geology of the China geological Society, Fellow of the American association of economic geologists (Beijing, China) **H = 25**

**FISCHER Axel**, Ph.D, associate professor, Dresden University of technology (Dresden, Germany) **H=6**

**KONTOROVICH Aleksey Emilievich**, doctor of geological and mineralogical sciences, professor, academician of RAS, Trofimuk Institute of petroleum geology and geophysics SB RAS (Novosibirsk, Russia) **H = 19**

**AGABEKOV Vladimir Enokovich**, doctor of chemistry, academician of NAS of Belarus, honorary director of the Institute of chemistry of new materials (Minsk, Belarus) **H = 13**

**KATALIN Stephan**, Ph.D, associate professor, Technical university (Dresden, Berlin) **H = 20**

**SEITMURATOVA Eleonora Yusupovna**, doctor of geological and mineralogical sciences, professor, corresponding member of NAS RK, head of the laboratory of the Institute of geological sciences named after K.I. Satpayev (Almaty, Kazakhstan) **H=11**

**SAGINTAYEV Zhanay**, Ph.D, associate professor, Nazarbayev University (Nursultan, Kazakhstan) **H = 11**

**FRATTINI Paolo**, Ph.D, associate professor, university of Milano-Bicocca (Milan, Italy) **H = 28**

---

**News of the National Academy of Sciences of the Republic of Kazakhstan. Series of geology and technology sciences.**

**ISSN 2518-170X (Online),**

**ISSN 2224-5278 (Print)**

Owner: RPA «National Academy of Sciences of the Republic of Kazakhstan» (Almaty).

The certificate of registration of a periodical printed publication in the Committee of information of the Ministry of Information and Social Development of the Republic of Kazakhstan **No. KZ39VPY00025420**, issued 29.07.2020.

Thematic scope: *geology, chemical technologies for oil and gas processing, petrochemistry, technologies for extracting metals and their connections.*

Periodicity: 6 times a year.

Circulation: 300 copies.

Editorial address: 28, Shevchenko str., of. 219, Almaty, 050010, tel. 272-13-19

<http://www.geolog-technical.kz/index.php/en/>

© National Academy of Sciences of the Republic of Kazakhstan, 2024

---

NEWS of the National Academy of Sciences of the Republic of Kazakhstan  
SERIES OF GEOLOGY AND TECHNICAL SCIENCES  
ISSN 2224-5278  
Volume 4. Number 466 (2024), 96–116  
<https://doi.org/10.32014/2024.2518-170X.428>

© **M.K. Jexenov<sup>1\*</sup>, Zh.K. Tukhfatov<sup>2</sup>, E.K. Bektay<sup>3</sup>, R.Sh. Abdinov<sup>1</sup>,  
G.S. Turysbekova<sup>3</sup>, 2024**

<sup>1</sup>Atyrau University named after Kh.Dosmukhamedov, Atyrau, Kazakhstan;

<sup>2</sup>OGPA “Dossormunaygaz” JSC “Embamunaygaz”, Atyrau, Kazakhstan;

<sup>3</sup>Kazakh National Research Technical University named after K.I. Satpayev, Almaty, Kazakhstan.

E-mail: [ddm85@mail.ru](mailto:ddm85@mail.ru)

## STRUCTURAL-TECHTONIC AND MINERALOGICAL STRUCTURE OF INDER LIFTING FIELD, MINING AND CHEMICAL RAW MATERIALS IN ATYRAU REGION

**Jexenov Makhambet** — candidate of Geographical Sciences, Kh.Dosmukhamedov Atyrau University, Atyrau, Kazakhstan

E-mail: [ddm85@mail.ru](mailto:ddm85@mail.ru); <https://orcid.org/0000-0002-1741-3931>;

**Tukhfatov Zhassulan** — candidate of geological and mineralogical science, OGPA “Dossormunaygaz” JSC “Embamunaygaz”, Atyrau, Kazakhstan

E-mail: [zh.tuhfatov@kmgep.kz](mailto:zh.tuhfatov@kmgep.kz) <https://orcid.org/0009-0007-3301-9997>;

**Bektay Erkin** — candidate of Technical Sciences, Kazakh National Research Technical University named after K.I. Satpayev, Almaty, Kazakhstan

E-mail: [erbekta@gmail.com](mailto:erbekta@gmail.com); <https://orcid.org/0000-0002-5304-5021>;

**Abdinov Rauan** — PhD, Kh.Dosmukhamedov Atyrau University, Atyrau, Kazakhstan

E-mail: [r.abdino@asu.edu.kz](mailto:r.abdino@asu.edu.kz); <https://orcid.org/0000-0001-9136-3369>;

**Turysbekova Gauhar** — candidate of Technical Sciences, Kazakh National Research Technical University named after K.I. Satpayev, Almaty, Kazakhstan

E-mail: [ipgauhartas@gmail.com](mailto:ipgauhartas@gmail.com); <https://orcid.org/0000-0003-1085-6470>.

**Abstract.** The paper presents studies on the facies complex of salt rocks of the boron-potassium deposit of the Inder uplift. Among them, the main widespread varieties of rocks are distinguished, namely, sylvine-polyhalite and carn. allite-kieserite. The chemical and mineralogical compositions of these rocks both along the strike of the layers and especially in the vertical section vary within wide limits, but at the same time there are certain patterns of relationships between the composition of minerals. The chemical and mineralogical characteristics of salt rocks are presented for wells where a change in the composition of salt rocks occurs with a transition to essentially carnallite rocks with bischofite. The internal salt tectonics of the deposit is distinguished by exceptional consistency of the general direction of the strike of both the entire structure as a whole, and the features that compose it. This is due to the proximity of the location of the monoclinical structure under consideration to the marginal part of the salt-dome uplift, as well as the basal anhydrite of the upper cycle of salt accumulation. The anhydrite horizons, which are found in the cores of all salt domes, are accepted as markers. The barium to strontium ratio was used to correlate the anhydrites. Based on the distribution of barium and strontium, the main anhydrite horizon was identified, which is of primary importance in establishing the identity of the sections

of salt deposits in the domes. The total thickness of the entire salt rock complex exposed in the area is estimated at 750–800 m. The footwall of the boron-potassium deposit contains stratigraphic younger rocks, while the hanging wall contains older ones. The productive strata are characterized by a complex mineral composition and are composed of sylvinites, polyhalite, kieserite, carnallite, and bischofite rocks. In many cases, potassium salts have mixed compositions. The most common boron minerals are hydroboracite, calborite, preobrazhenskite, boracite, etc.

**Keywords:** boron-potassium deposit, basal anhydrite, sylvine-polyhalite and carnallite-kieserite rocks, bischofite, salt tectonics, boron minerals – hydroboracite, calborite, preobrazhenskite, boracite

© М.Қ. Джексенов<sup>1\*</sup>, Ж.Қ. Тухфатов<sup>2</sup>, Е.Қ. Бектай<sup>3</sup>, Р.Ш. Абдинов<sup>1</sup>,  
Г.С. Тұрысбекова<sup>3</sup>, 2024

<sup>1</sup>Х. Досмұхамедов атындағы Атырау университеті, Атырау, Қазақстан;

<sup>2</sup>НГДУ «Доссормұнайгаз» АҚ «Ембімұнайгаз», Атырау, Қазақстан;

<sup>3</sup>Қ.И. Сәтбаев атындағы Қазақ ұлттық ғылыми-зерттеу техникалық университеті,  
Алматы, Қазақстан.

E-mail: ddm85@mail.ru

## АТЫРАУ ОБЛЫСЫНЫҢ ИНДЕР КӨТЕРІЛІМІНІҢ СТРУКТУРАЛЫ- ТЕХТОНИКАЛЫҚ ЖӘНЕ МИНЕРАЛДЫҚ ҚҰРЫЛЫМЫ, ТАУ-КЕН ХИМИЯЛЫҚ ШИКІЗАТЫ

Джексенов Махамбет Құдйбергенович — география ғылымдарының кандидаты, Х. Досмұхамедов атындағы Атырау университеті, Атырау, Қазақстан

E-mail: ddm85@mail.ru; <https://orcid.org/0000-0002-1741-3931>;

Тухфатов Жасулан Қасимович — геология және минералогия ғылымдарының кандидаты, «Эмбамұнайгаз» АҚ, «Доссормұнайгаз» МГӨБ, Атырау, Қазақстан

E-mail: zh.tuhfatov@kmger.kz <https://orcid.org/0009-0007-3301-9997>;

Бектай Еркін — техника ғылымдарының кандидаты, Қ.И. Сәтбаев атындағы Қазақ ұлттық ғылыми-зерттеу техникалық университеті, Алматы, Қазақстан

E-mail: erbekta@gmail.com; <https://orcid.org/0000-0002-5304-5021>;

Abdinov Rauan — PhD доктор, Х.Досмұхамедов атындағы Атырау университеті, Атырау, Қазақстан

E-mail: r.abdinov@asu.edu.kz; <https://orcid.org/0000-0001-9136-3369>;

Turysbekova Gauhar — техника ғылымдарының кандидаты, Қ.И. Сәтбаев атындағы Қазақ ұлттық ғылыми-зерттеу техникалық университеті, Алматы, Қазақстан

E-mail: ipgauhartas@gmail.com; <https://orcid.org/0000-0003-1085-6470>.

**Аннотация.** Мақалада Индер көтеріліміндегі бор-калий кен орнының тұзды жыныстарының фациялық кешені берілген. Олардың ішінде тау жыныстарының негізгі кең таралған түрлері ерекшеленеді, атап айтқанда сальвин-полигалит және карналлит-кизерит. Бұл жыныстардың химиялық-минералогиялық құрамы қабаттардың соғуы бойынша да, әсіресе тік қимасында да кең ауқымда өзгереді, бірақ сонымен бірге минералдардың құрамы арасында белгілі бір байланыс заңдылықтары бар. Тұзды жыныстардың құрамының өзгеруі ұңғымаларда да кездеседі, онда бишофит бар негізінен карналлиттік жыныстарға ауысатын тұзды жыныстар. Кен орнының ішкі тұз тектоникасы тұтас құрылымның да, оның құраушы белгілерінің де соғуының жалпы бағыты бойынша ерекше консистенциясымен ерекшеленеді. Бұл



қарастырылып отырған моноклинальды құрылымның орналасуының тұз күмбезінің көтерілуінің шеткі бөлігіне, сондай-ақ тұздың жиналуының жоғарғы циклінің базальды ангидритіне жақын болуына байланысты. Маркерлер ретінде барлық тұзды күмбездердің өзектерінде кездесетін ангидрит горизонттары алынады. Ангидриттерді корреляциялау үшін барий мен стронцийдің қатынасы пайдаланылды. Барий мен стронцийдің таралуы негізінде күмбездердің тұзды шөгінділерінің учаскелерінің сәйкестігін белгілеуде бірінші дәрежелі маңызы бар негізгі басты ангидриттік горизонт анықталды. Өнімділік қабаты күрделі минералды құраммен сипатталады және сильвиниттер, полигалит, кизерит, карналлит және бишофит жыныстарынан тұрады. Көптеген жағдайларда калий тұздары аралас композицияларға ие. Бордың ең көп таралған минералдары гидроборцит, калибрит, преображенскит, борацит, т.б.

**Түйін сөздер:** бор-калий кен орны, базальды ангидрит, сильвин-полигалит және карналлит-кизерит жыныстары, бишофит, тұз тектоникасы, бор минералдары – гидроборцит, калибрит, преображенскит, борацит

© М.К. Джексенов<sup>1</sup>, Ж.К. Тухфатов<sup>2</sup>, Е.К. Бектай<sup>3</sup>, Р.Ш. Абдинов<sup>1</sup>,  
Г.С. Турысбекова<sup>3</sup>, 2024

<sup>1</sup>Атырауский университет имени Х. Досмухамедова, Атырау, Казахстан;

<sup>2</sup>НГДУ «Доссормунайгаз» АО «Эмбаунайгаз», Атырау, Казахстан;

<sup>3</sup>Казахский национальный исследовательский технический университет им. К.И. Сатпаева, Алматы, Казахстан.

E-mail: ddm85@mail.ru

## СТРУКТУРНО-ТЕХТОНИЧЕСКОЕ И МИНЕРАЛОГИЧЕСКОЕ СТРОЕНИЕ МЕСТОРОЖДЕНИЙ ИНДЕРСКОГО ПОДНЯТИЯ, ГОРНО-ХИМИЧЕСКОЕ СЫРЬЁ В АТЫРАУСКОЙ ОБЛАСТИ

**Джексенов Махамбет Күдібергенович** — кандидат географических наук, Атырауский университет имени Х. Досмухамедова, Атырау, Казахстан

E-mail: ddm85@mail.ru; <https://orcid.org/0000-0002-1741-3931>;

**Тухфатов Жасулан Қасимович** — кандидат геолого-минералогических наук АО «Эмбаунайгаз», НГДУ «Доссормунайгаз», Атырау, Казахстан

E-mail: zh.tuhfatov@kmgp.kz <https://orcid.org/0009-0007-3301-9997>;

**Бектай Еркин Қалдыбаевич** — кандидат технических наук, Казахский национальный исследовательский технический университет им. К.И. Сатпаева, Алматы, Казахстан

E-mail: erbekta@gmail.com; <https://orcid.org/0000-0002-5304-5021>;

**Абдинов Рауан Шарипбаевич** — PhD доктор, Атырауский университет имени Х. Досмухамедова, г. Атырау, Казахстан

E-mail: r.abdinov@asu.edu.kz; <https://orcid.org/0000-0001-9136-3369>;

**Турусбекова Гаухар Сейтхановна** — кандидат технических наук, Казахский национальный исследовательский технический университет им. К.И. Сатпаева, Алматы, Казахстан

E-mail: ipgauhartas@gmail.com; <https://orcid.org/0000-0003-1085-6470>.

**Аннотация.** В работе представлены исследования по фациальному комплексу соляных пород борно-калийного месторождения Индерского поднятия. Среди них выделяются основные распространенные разновидности пород, а именно сильвин-полигалитовые и карналлит-кизеритовые. Химико-минералогические составы этих



пород как по простиранию пластов, так и особенно в вертикальном разрезе изменяются в широких пределах, но при этом имеют место определенные закономерности связей состава минералов. Представлена химико-минералогическая характеристика соляных пород по скважинам, где происходит изменение состава соляных пород с переходом к существенно карналлитовым породам с бишофитом. Внутренняя соляная тектоника месторождения отличается исключительной выдержанностью общего направления простирания как всей структуры в целом, так и слагающих им особенностей. Это связано с близостью расположения рассматриваемой моноклиальной структуры к краевой части солянокупольного поднятия, а также базального ангидрита верхнего цикла соленакпления. В качестве маркирующих приняты горизонты ангидритов, которые встречаются в ядрах всех соляных куполов. Для корреляции ангидритов было использовано отношение бария к стронцию. По характеру распределения бария и стронция был выделен главный ангидритовый горизонт, имеющий первостепенное значение при установлении идентичности разрезов соляных отложений куполов. Общая мощность всего вскрытого на участке комплекса соляных пород оценивается в 750-800 м. В лежачем боку борно-калийного месторождения находятся стратиграфически более молодые породы, а в висячем – более древние. Продуктивная толща характеризуется сложным минеральным составом и складывается сильвинитами, полигалитовыми, кизеритовыми, карналлитовыми и бишофитовыми породами. Во многих случаях калийные соли имеют смешанные составы. Наиболее распространенные борные минералы – гидроборатит, калиборит, преображенскит, боратит и др.

**Ключевые слова:** борно-калийное месторождение, базальный ангидрит, сильвин-полигалитовые и карналлит-кизеритовые породы, бишофит, соляная тектоника, борные минералы – гидроборатит, калиборит, преображенскит, боратит

### **Introduction**

The significant resources of very scarce mining and chemical raw materials for the economy of Kazakhstan Republic are concentrated in the depths of the Caspian cavity, the Aktobe in the Urals and adjacent areas, including many types of boron-potassium, potassium-magnesium, magnesium chloride salts, boron ores, sodium sulfate, bromine and others. This raw material is still little used, but it is extremely necessary for many industries and the agricultural sector. All of them are associated with salt-bearing fields of the Lower Permian halogen formation of the Northern Caspian region, except sodium sulfate, and also called the East European salt-bearing basin.

According to the level of exploration, 95 structures are known to date in Kazakhstan part of the salt-bearing basin, bearing potassium mineralization to one degree or another, which 50 are perspective. In terms of the amount of potassium and magnesium salts resources, only four objects are classified in the fields of Zhilyanskoye, Inderskoye, Satimolinskoye and Chelkarskoye (Gorbov, 1973: 70–104; Bocharov et al., 1981: 139–144; Akse-nov et al., 2000: 5–6; Ivanov et al., 1972. 328; Korenevsky et al., 1966: 297; Tikhvinsky, 1976: 102–114; Tikhvinsky, 1985: 15–20; Filko, 1990: 6–12).

The Inder lifting field, which is associated with a peculiar complex of potassium-magnesium boron-bearing salt rocks of various compositions, is a salt-dome structure of an open, intruded type. The anticlinal part of this dome, cut off by the denudation surface over an area of about 250 km<sup>2</sup>, is covered only by a complex of residual gypsum cap rocks of relatively low thickness. In this regard, some structural elements of the salt strata are

reflected directly in the relief structures of the gypsum cap and serve as an important factor in deciphering the tectonics of the salt strata of the lifting field.

Currently, the Inder lifting field is one of the most developed salt domes of the Caspian basin by drilling. More than seven thousand wells over 1–2 km have already been drilled on its area, deepening into the salt rocks. Wells are located very unevenly on the area of the uplift and, accordingly, its different sections have been studied with varying degrees of detail.

Most of the surface of the Inder lifting field is covered with a uniform network of boreholes with a density of 14 boreholes per 1–2 km; in some exploration areas (pic. 1) a net of boreholes 250x100 m reached a density of 40 boreholes per 1-2 km, and finally, in relatively small development areas side deposits in the gypsum cap and horizons of potassium boron-bearing salt rocks in the salt mass, drilling was carried out at an even greater density.

The boron-potassium deposit in question is located in the southeastern part of the Inder uplift and is located not far from the north-east shore of Lake Inder. It is intersected by twenty-three exploration profiles located on average every 100 m, which for more than 2 km trace the distribution of boron-bearing potassium and potassium-magnesium salt rocks and associated borate deposits in a gypsum cap. Thanks to additional drilling of deeper and inclined wells, the genetic connection of the borate deposits of the gypsum cap with the boron-bearing horizons of the salt strata, some features of the tectonics of salt rocks and changes in their chemical and mineralogical composition were clearly revealed.

#### **Research materials and methods**

To determine the mineral composition of the rocks by complete and abbreviated salt analyzes were carried out in laboratory conditions. A complete method includes immersion microscopic method for clarifying the density, cleavage and quantitative composition of minerals, abbreviated method includes determining specific gravity, dry and insoluble residue. When transporting and storing ore, the safety requirements of GOST 12.2.003, GOST 12.3.009 must be met. Sample preparation for chemical analysis was carried out according to GOST 21560.0 (Safety rules for mining and processing of solid minerals, 2013). Sample analyzes according to GOST 20651.3-93. The results of the study are reflected in the following tables.

To clarify the geological structure and tectonic structure of the salt mass in the area of the boron-potassium deposit, geological sections were compiled along all exploration profiles, and on their basis, a geological and lithological map of the surface of the salt mirror, which is presented in (Pic. 2). As can be seen from this map, a pack of salt rocks emerges on the surface of the salt mirror, having a fairly consistent north-west strike and a steep dip, at an angle of 70–800, to the northeast.

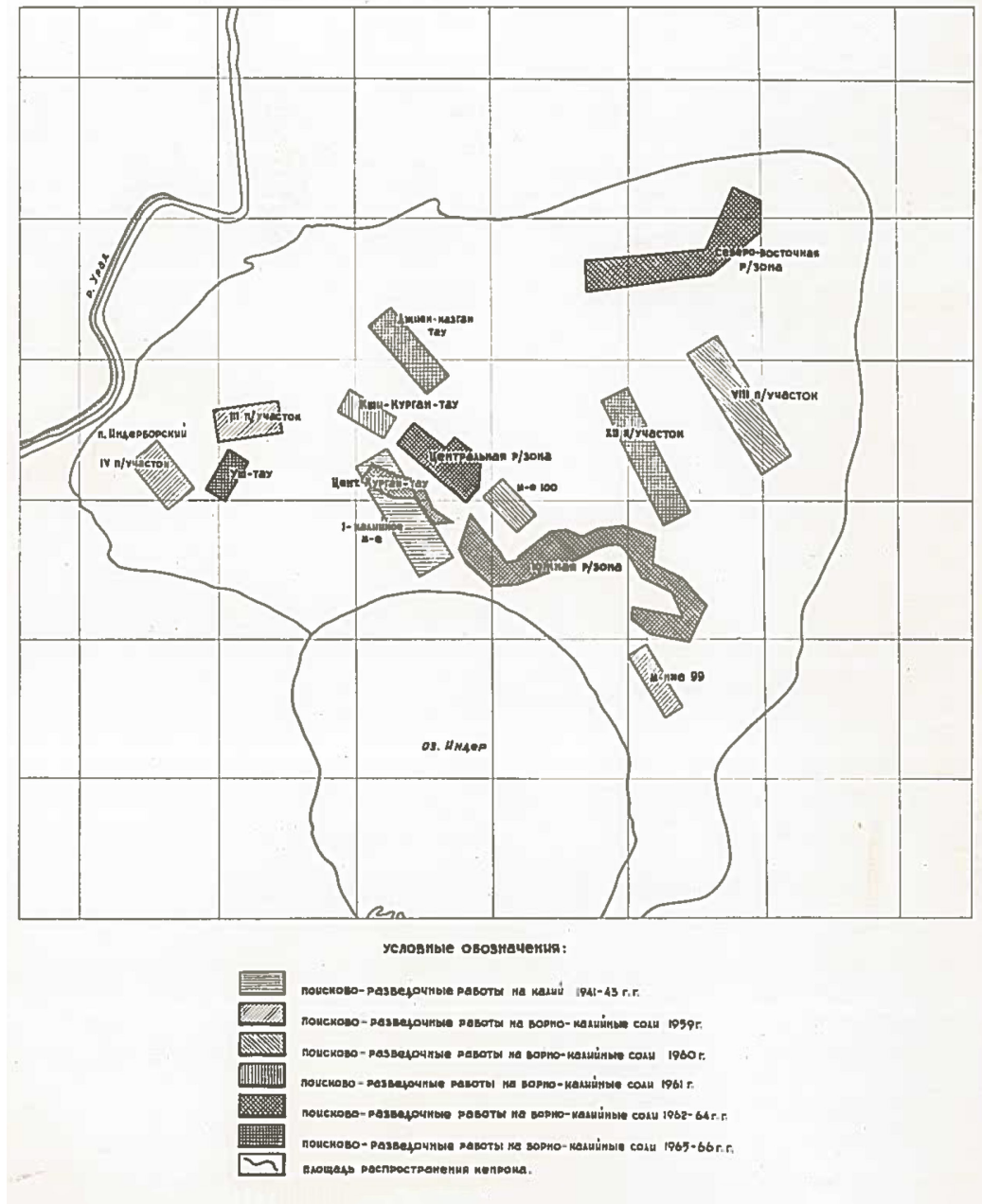


Figure 1 – Layout of prospecting and exploration areas for boron-potassium salts

Thus, in the area of the boron-potassium field, there is essentially a monoclinical structure, placed almost on its head, and in accordance with this, the salt mirror is an erosional section, on the surface of which layers of salt rocks are exposed. The pattern of exposure of these layers to the surface of the salt mirror obviously reflects the nature of tectonic disturbances in layering and, as can be seen on the geological and lithological map presented in (Pic. 2), in this area the salt rocks are characterized by relatively calm compression



Figure 2 – Schematic geological and lithological map of the salt mirror of the boron-potassium field



Both on the geological sections (Pic. 3) and on the geological-lithological map of the salt mirror and the stratigraphic section of the Lower Permian field, it is clearly visible that the salt layer, uncovered by wells in the boron-potassium deposit area, is represented in the main rock salt unit containing the formation and lenses of boron-bearing potassium and potassium-magnesium salt rocks, predominantly sulfate in composition.

Among them, there is a frequent alternation of two main varieties of rocks, often connected by mutual transitions, these are sylvite - polyhalite with calibrite and carnallite-kieserite with preobrazhenskite. The chemical-mineralogical composition of these rocks is very variable and along the strike of the same layer varies from essentially sylvinite to glaserite or kainite, on the one hand, and from essentially bischofite and carnallite to kieserite and less commonly kainite, on the other.

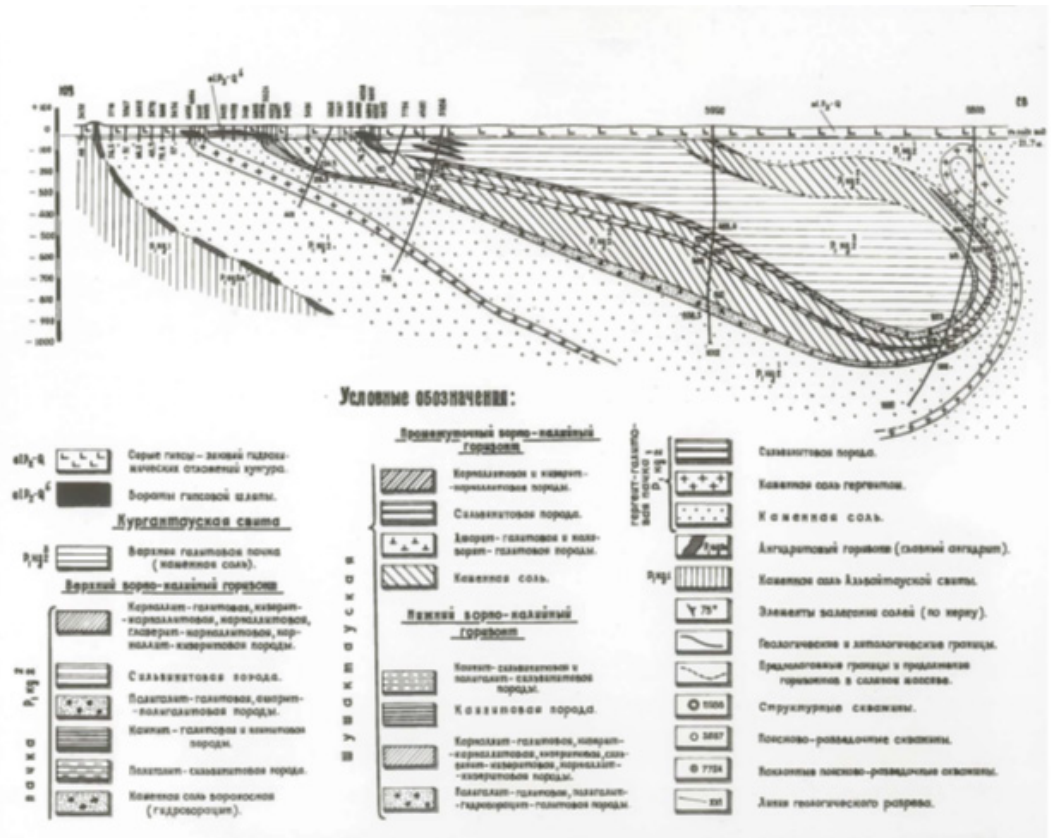


Figure 3– Geological section along lines XV–XV

Below we will give a brief chemical and mineralogical characteristics of the salt rocks of this area. The main rock that makes up the section of the salt strata in the area of the boron-potassium deposit, as noted, is rock salt. According to incomplete chemical analyses, the halite content in this rock varies widely, from 85.5 to 97 % NaCl; impurities are represented mainly by anhydrite and to a lesser extent by carbonates, borates, clayey matter and some other minerals.

Layers and lenses of sylvite-polyhalite-halite rocks have a fairly uniform mineralogical but highly variable chemical composition. In most cases, these rocks, according to available chemical analyzes and immersion viewing of samples, are characterized by the following weighted average composition:

Table 1  
Weighted average sample composition

№ well / interval, m	CКВ№6009 46,1–69,5		CКВ№3612 48,2–66,2		CКВ№6011 48–53,3    54,6–58	
	Minerals					
halite	78,6 %	66,2 %	80,9 %	72,8 %		
polyhalite	13 %	21,2 %	8,6 %	14,9 %		
Sylvina	7,2 %	10,7 %	7,2 %	7,5 %		
caliborite	1 %	1,8 %	1,7 %	0,1 %		
anhydrite	-	0,2 %	0,2 %	0,2 %		

As you can see, it is mainly rock salt with a large admixture of sylvite and polyhalite. In some places among these rocks there is an interlayer containing up to 30 % clays, in some places they turn into sylvinites (well No. 3565, 6020, etc.), the composition of which can be characterized by the following limits of the content of the main components:

Table 2  
Composition of samples from well No. 3565,6020

Minerals	Avarage content
Halita	38.4 - 52.8 %
Silvina	32 - 42.1 %
Polyhalite	10.2 - 16.3 %
Caliborite	0.8 - 2.2 %
Others	2.8 - 4 %

Among the latter are lenses of sylvite-caliborite rocks containing up to 45 % caliborite and more than 36 % sylvite (well No. 3565, depth 46.0–48.0 m). Peculiar polyhalite-ascharite-halite rocks were encountered in well No. 6051 (10.3–17.2 % asharite).

In some areas of these rocks along the strike of the same formation, instead of the usual polyhalite, kainite is present in significant quantities.

Indicative in this regard are the rocks discovered by well No. 4038 on the XV exploration profile. In the section of this well, six layers can be distinguished, the mineralogical composition of which, according to recalculation of chemical analyzes, is characterized by the following ratios of the main components

Table 3  
Mineral analysis of samples from well No. 4038

interval, m	Minerals					
	4 7 , 5 – 53,5	5 3 , 5 – 57,5	57,5–62,0	62,0–64,0	64,0–66,0	66,0–70,0
Halita	74,5 %	68,5 %	42,9 %	32,8 %	61,6 %	88,1 %
Cainita	14,0 %	23,8 %	48,5 %	27,8 %	4,5 %	0,3 %
Silvina	7,7 %	2,9 %	3,9 %	26,6 %	21,6 %	-
Polyhalite	-	-	-	-	-	-
Kaliborita	1,2 %	2,5 %	2,1 %	9,4 %	7,5 %	0,2 %
Anhydrite	3,0 %	2,9 %	2,2 %	2,9 %	3,7 %	-

Essentially Cainite rock was encountered on the 11th exploration profile by well No. 3583. This breed is characterized by the following composition:

Table 4  
Data on well No. 3583

Minerals	Content
Cainita	56.6 %
Halita	27.2 %
Caliborita	11.9 %
Silvina	2.6 %
Anhydrite	1.5 %

In some cases, the appearance of essentially glaserite rocks is noted among the layers of the rocks under consideration. The mutual transition of the above is most clearly established in the section of well No. 6020 on the XVI exploration profile, which from 44.7 to 50.7 m, as noted above, passed through a fairly rich polyhalite-sylvite-halite rock, and lower to 58.7 m. intersected significantly glaserite rocks, content from 25.94 to 42.62 % glaserite. The weighted average composition of the rock in this interval (from 50.7 to 58.7 m) is expressed by the following contents of the main components:

Table 5  
Weighted average rock composition in the interval (from 50.7 to 58.7 m)

Minerals	Content
Glaserite	35.0 %
Halita	33.0 %
Polyhalite	14.3 %
Silvina	10.6 %
Cainita	4.8 %
Kaliborita	1.2 %

Rocks of similar composition were also discovered by the neighboring well No. 6017, which passed through them from 58.6 % to 73.2 m and stopped in rock containing 42.64 % glaserite. Similar rocks with an admixture of glaserite were encountered on the Xth exploration profile by well No. 4527, on the XVIth exploration profile by well No. 4517 and in some other places in the area under consideration.

In the recumbent side of the sylvite-polyhalite rock formation, extending from the northeast

side of the site of boron-potassium deposit No. 99, a noticeable admixture of carnalite appears among the usual minerals composing it, this can be seen in the following data from the calculation of chemical analyzes for the mineralogical composition, according to immersion viewing of samples from well No. 6010 (XV profile):

Table 6  
Conversion of chemical analysis data to mineralogical composition for well No. 6010

Interval, m Minerals	48,0–51,5	51,5–66,5	66,5–69,0
Halita	65,5 %	74,0 %	68,2 %



Polyhalite	18,8 %	5,7 %	20,3 %
Silvina	11,2 %	7,6 %	5,4 %
Carnallita	1,0 %	3,1 %	2,2 %
Kaliborita	3,3 %	2,6 %	1,6 %
Anhydrite	-	7,0 %	2,4 %

On the XIII exploration profile, three inclined wells No. 6054, 6053, 6057, as well as vertical wells 3584 and 3564, uncovered this entire formation, which in this place has a true thickness of 60 m. Wells No. 6054 and No. 6053 discovered ordinary low-grade sylvite-polyhalite-halite rocks, which are characterized by the following content limits of the main components:

Table 7  
Contents of components for wells No. 6054 and No. 6053

Minerals	Content
Halite	55.8–79.0 %
Polyhalite	11.0–6.4 %
Silvina	3.4–23.0 %
Kaliborita	1.4–2.5 %

Inclined well No. 6057 in the upper part, from 48.5 to 52.5 m. intersected poor sylvite-polyhalite rocks, similar in composition to those reached at the bottom of well No. 6058. Below, from 52.5-halite (0.07–1.34 % K) and caliborite (0.69–1.07 % B2O2), and then the well entered the zone of kieserite-carnallite - halite rock, which, in the interval 75.0–76.0, ends with kieserite-carnallite rock, as can be seen from the following data from the recalculation of chemical analyzes to the mineralogical composition:

Table 8  
Sample analysis data for well No. 6057

Interval, m	73,5–75,0	75,0–76,0
Minerals		
Carnallita	21,3 %	42,2 %
Kieserita	18,6 %	25,8 %
Halita	50,7 %	21,4 %
Silvina	3,4 %	5,6 %
Boratorv	3,4 %	3,5 %
Anhydrite	2,6 %	1,3 %

In accordance with the change in the composition of the rock with depth, char-

acteristic of sylvite - polyhalite-halite rocks, calibrite is replaced towards the bottom by preobrazhenskite and boracite, the main boron minerals of the kieserite-carnallite rock. In the footwall of this rock, from 76.0 to 88.0 m, the well entered rock salt with anhydrite containing 93.3 % halite and about 6 % anhydrite.

It should be noted that vertical well No. 3564, drilled slightly southwest of inclined well No. 6057, intersected the same layer of kieserite - carnallite rock at its very exit to the salt mirror. The mineralogical composition of the rock found here is as follows:

Table 9  
Mineralogical composition of the rock from well No. 3564

Minerals	Content
Carnallite	33.4 %
Kieserita	26.1 %
Preobrazhenskite	17.6 %
Halita	14.4 %
Bishofita	5.4 %
Polyhalite	2.8 %

As can be seen from the given values, this rock is generally similar to the rocks encountered by well No. 6057 in the interval 75.0–76.0 m, but the appearance of bischofite here, as well as the increased boron content expressed by preobrazhenskite, attracts attention.

### Results

Thus, the layers of the considered rocks, both in section and along strike, showed changes in composition from essentially kainite and glaserite, on the one hand, to essentially carnallite with bischofite, on the other.

In addition to the rocks considered, carnallite-kieserite rocks with compositional changes within a very wide range are also significantly developed in the area of deposit.

The main layer of these rocks extends across the central part of the site; a number of smaller lenses and interlayers were encountered in the very northwestern part of it.

The variability of the composition of carnallite-kieserite rocks is perfectly illustrated by the data of recalculation of chemical analyzes to mineralogical composition for the section of well No. 6059, which are given in Table No. 1. As can be seen from the data in this table, the considered formation in the section of well No. 6059 is represented mainly by carnallite-kieserite rocks with preobrazhenskite

Table 10. Results of recalculation of chemical analysis data for the section of well No. 6059 into mineralogical composition (wt.%)

Interval, m	56-57	57-58	58-59	59-60	60-61	61-62	62-63	63-64	64-65	65-66	66-67	67-68	68-69
Minerals													
Halite	74,4%	75,5%	83,6%	61,8%	16,0%	12,6%	23,2%	55,7%	88,9%	77,4%	58,7%	64,0%	25,6%
Kieserit	3,1%	1,4%	1,8%	14,3%	44,5%	70,9%	45,3%	19,1%	0,8%	0,9%	3,5%	2,1%	33,5%

Carnallite	15,2%	13,4%	6,4%	13,4%	26,3%	13,0%	22,6%	12,5%		12,3%	16,6%	24,5%	30,1%
Silvin	1,0%	0,1%	0,8%	--	2,5%	1,5%	1,9%	2,0%		0,4%	1,9%	0,8%	2,8%
Anhydrite	3,7%	5,5%	5,1%	2,5%	0,8%	0,4%	1,7%	2,2%		3,8%	4,9%	3,0%	3,1%
Preo- brazhenskit	2,7%	4,2%	2,8%	6,4%	8,9%	1,1%	4,3%	8,0%		4,9%	16,4%	4,7%	6,9%
Undissolved residue	0,1%	0,1%	0,1%	0,1%	0,2%	0,1%	0,1%	0,3%		1,1%	0,1%	0,1%	0,3%

Table 11. Results of recalculation of chemical analysis data along the well section into mineralogical composition (wt.%)

Wells	№6016	№6058		№6118	
Interval, m	48,6-68,2	83,0-93,1	47,8-48,7	48,7-56,7	48,6-68,2
Minerals					
Kieserita	31,2-40,7 %	19,5 %	16,4 %	Kieserita	31,2-40,7 %
Carnallita	15,9-30,9 %	19,6 %	--	Carnallita	15,9-30,9 %
Halita	11,7-22,2 %	40,8 %	36,3 %	Halita	11,7-22,2 %
Silvin	--	2,0 %	12,8 %	Silvin	--
Bishofita	--	--	10,8 %	Bishofita	--
Preobrazhenskite	9,4-40,2 %	17,2 %	--	Preobrazhenskite	9,4-40,2 %
Others	0,6-1,5 %	1,4 %	1,2 %	Others	0,6-1,5 %

It should be noted that in the roof of the main layer of carnallite-kieserite rocks on the IV and V exploration profiles, wells Nos. 3370 and 6113 uncovered rocks depleted in kieserite and carnallite, but enriched in sylvite and polyhalite. In composition, they are close to the previously considered sylvite-polyhalite-halite rocks, which can be seen from the following data from the conversion of chemical analyzes to mineralogical composition:

Table 12  
Composition of samples for wells No. 3370 and 6113

Wells	№3370		№6113
Interval, m	43,2-57,0		64,5-69,7
Minerals			
Halita	74,9 %	69,6-76,1 %	72,2 %
Silvin	13,8 %	7,6-21,7 %	13,2 %
Polyhalite	5,6 %	3,0-5,1 %	7,3 %
Carnallita	2,4 %	--	--

Kieserita	--	0,9-2,3 %	--
Kaliborita	1,9 %	--	1,2 %
Preobrazhenskite	--	1,7-6,6 %	--
Impurities	1,2 %	0,2-0,25 %	0,2 %

In well No. 3470 on the XIV exploration profile, where the layer of carnallite-kieserite rocks experiences an inflection, along with the expected rocks, a polyhalite-sylvite-halite rock with a calibrite of the following composition were discovered:

Table 13  
Composition for well No. 3470

Minerals	Content
Halita	52.1 %
Silvina	19.1 %
Polyhalite	15.8 %
Kaliborita	9.4 %
Impurities	3.3 %

Similar changes in the mineralogical composition of this formation are also established along strike in the very southeastern part of the boron-potassium deposit site (wells No. 4023, 4045).

On the III exploration profile, inclined wells No. 6058, 6059 and 6068 exposed the main layer of carnallite-kieserite rocks to the full thickness, which is 35 m here. The composition of the rocks have already been given above in wells No. 6058 and 6059.

In the downstream side of the formation, well No. 6068 discovered kieserite rocks with halite and carnallite, characterized by the following content limits of the main components:

Table 14  
Data for wells No. 6068

Minerals	Avarage Content
Kieserita	52.0 -- 84.1 %
Halite	5.5 -- 23.2 %
Carnallite	3.4 – 20.5 %
Silvina	1.2 – 11.0 %
Preobrazhenskite	0.8 – 3.9 %

Vertical well No. 3617, drilled between inclined wells No. 6058 and 6068 in the upper part from 46.6 to 61.7 m, uncovered heavily boron-bearing rocks, containing up to 48 % preobrazhenskite, which in dip corresponds to the rich boron-bearing rocks discovered by well No. 6058 at in the interval 83.0-93.1 m, below, from 64.55 to 76.3 m (bottomhole), it entered kieserite rocks, corresponding in terms of formation uplift to the rocks penetrated by well No. 6068, and in the interval from 61.7 to 64.55 m encountered an interlayer of kieserite-carnallite rock with bischofite of the following composition:

Table 15  
Data for well No. 6068

Minerals	Content
Carnallite	41.5 %
Kieserita	32.7 %
Bischofita	14.0 %
Halita	5.9 %
Preobrazhenskite	1.7 %
Anhydrite	1.7 %
Clay matter	2.5 %

In addition to the main layer of carnallite - kieserite rocks discussed above, an inter-layer of carnallite rock with polyhalite was encountered by wells No. 6105, 6107 and 6106 in the southwestern part of the exploration profile and well No. 3296 on the VII exploration profile (see Fig. 2). Interlayers of carnallite rock were encountered, and on the northeastern side of the boron-potassium field site, wells No. 6070, 6224, 6213, 6204 and 6202 in the section of the last well, among the carnallite rock at an interval of 75.0–78.0 m, bischofite rock was encountered containing 84, 26 % bischofite, 6.44 % kieserite and 4.5 % halite and carnallite.

There are almost no burrs in these rocks, but the relatively high bromine content in bischofite rocks is noteworthy - 0.329–0.411 %.

Thus, in the area of the boron-potassium deposit, a unique facial complex of salt rocks is exposed. It is represented by a steeply descending rock salt unit containing layers, layers and lenses of boron-bearing potassium and potassium-magnesium salt rocks, predominantly sulfate in composition.

Among them, two main, most common varieties of rocks stand out, between which mutual transitions are outlined, namely syvin — halite polyhalite and carnallite - kieserite. The chemical and mineralogical composition of these rocks, both along the strike of the layers and especially in the vertical section, varies within wide limits, but a certain pattern is captured.

From the above chemical and mineralogical characteristics of salt rocks, as well as from the data of the geological section along the XV exploration profile (Fig. 3), it clearly emerges that both in the sylvite layers there are polyhalite-halite, and in the layers of carnallite-kieserite rocks with northeast to southwest, that is, towards the recumbent side, the composition of the salt rocks changes with their transition to essentially carnallite rocks with bischofite.

If this general direction of change in the composition of rocks in the vertical section of salts is a relic of the normal sequence of salt deposition in the salt basin, then in the area of the boron-potassium deposit we are essentially dealing with a structure overturned to the southwest. In other words, in this area, as one would expect (Khalturina et al., 1985: 215; Valyashko; Diarov et al., 1981: 101–109), in the north-eastern part of the deposit, that is, closer to the central part of the salt uplift, there are lower stratigraphic horizons, and in the direction towards its marginal parts, that is, towards roof in the south-west direction, increasingly upper stratigraphic horizons of the salt strata emerge on the surface of the salt mirror

Both on the northeastern and southwestern sides of the monoclinical structure of the boron-potassium deposit site, there are almost parallel ridges of gypsum-anhydrite rocks, indicating the presence of anhydrite horizons in the salt stratum. Unfortunately, the com-

plete section between the anhydrite horizons in this area has not been established in detail by drilling.

The total thickness of the entire salt rock complex discovered on the site is estimated at 750–800 m.

In structural-tectonic terms, the boron-potassium deposit is located in the southern part of the Inder uplift and is located on the southwestern wing of the salt dome structure framing the depression basin of Lake Inder. This situation determines the main features and peculiarities of the tectonic structure of the salt block explored by surface and underground mine workings. In general terms, this block can be described as a monoclinical structure, extending along the side of the uplift from northwest to southeast with the strata dipping to the northeast at an angle of about 70°.

Taking into account the fact that the roof of the salt strata of the uplift is located in its peripheral frame, the salt rocks of the monoclinical structure falling to the north-east actually have an overturned bedding to the southwest, reflecting the presence of a cornice in the side part of the salt-dome structure,

Thus, in the recumbent side of the boron-potassium deposit there are stratigraphically younger rocks, and in the hanging side there are more ancient ones. This general rule should be taken into account not only in general stratigraphic constructions, but also when comparing different horizons of salt rocks exposed in the field.

The features of internal salt tectonics are quite clearly revealed from the analysis of documentation materials from underground mine workings. As can be seen from the structural-lithological map compiled from this material, the block of salt strata discovered at a horizon 300 m below the surface, as in the salt mirror, has a fairly simple tectonic structure. When considering this map, attention is drawn, first of all, to the exceptional consistency of the general direction of strike of both the entire structure as a whole, as well as the features that make it up

Against the background of the consistency of the main liniments of the tectonics of the layered structure, only smooth bends of individual layers, layers and units of salt rocks are noted, which are a reflection of local manifestations of layer-by-layer plastic movements of salt. The latter are usually accompanied by noticeable changes in the thickness of the salt rocks that make up the layers, layers and units, without breaking their continuity. The only exceptions in this regard are the layers of anhydrite and polyhalite.

The noted consistency of the bedding strike is due to the proximity of the location of the monoclinical structure under consideration to the marginal part of the salt dome uplift, as well as the basal anhydrite of the upper cycle of salt accumulation. At the level of annual layers, manifestations of isoclinal folding of different orders are noted, but it does not violate the consistency of the main liniments of tectonics, since the axial densities of these folds are oriented parallel or almost parallel to the general strike of the monoclinical structure.

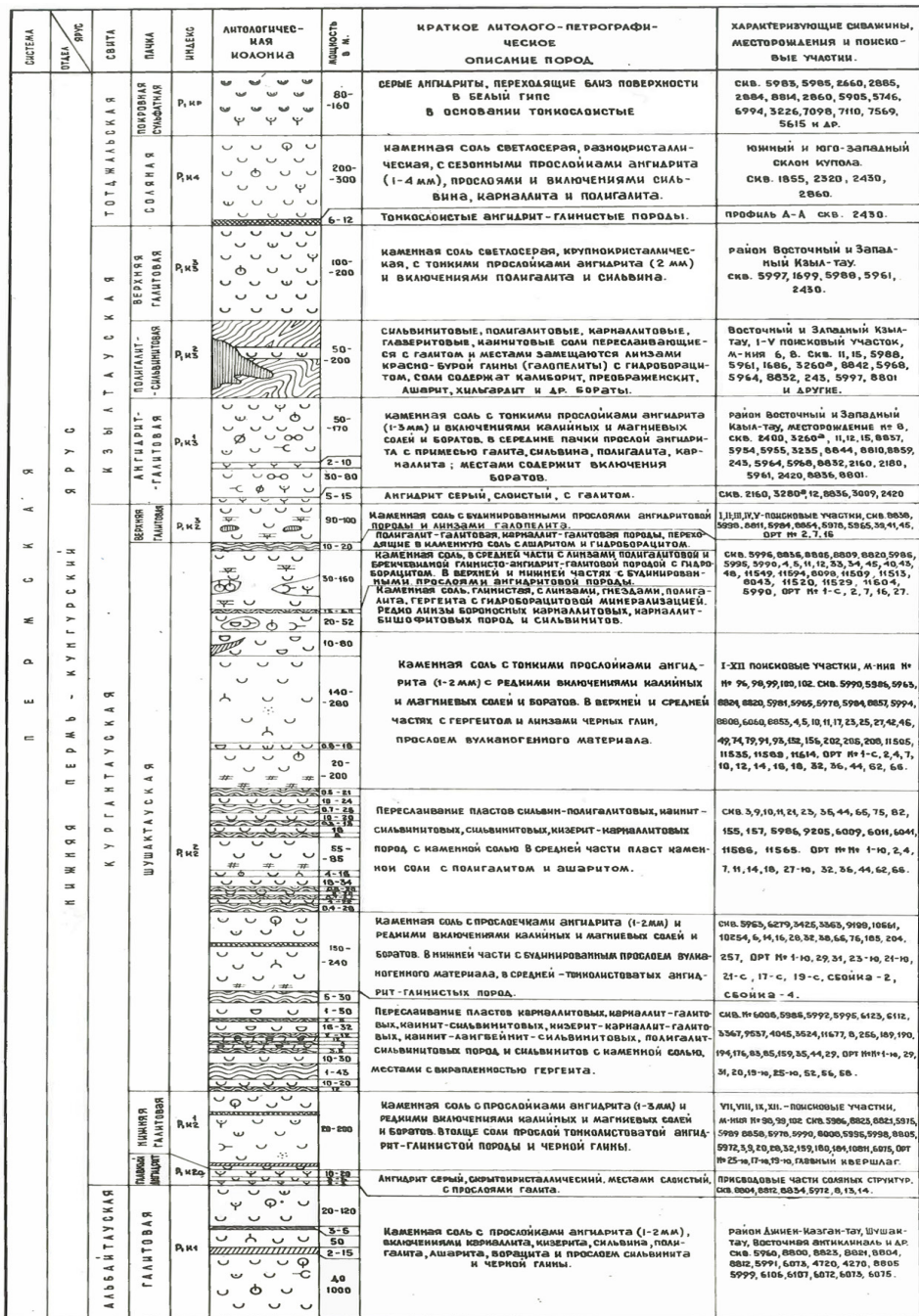
The main complicating element of the internal tectonics of the salt mass at the deposit is a large ring structure, opening in the south-eastern half of the ore field, between the main crosscut in the north-west and ort 16 in the south.

The productive stratum is characterized by a complex mineral composition and is composed of sylvinites, polyhalite, kieserite, carnallite and bischofite rocks. The potassium salts have mixed compositions in many cases.

The most common boron minerals are hydroboracite, calibrite, preobrazhenskite, boracite, etc. (Fig. 4). During the formation of the domes, the original sequence of occurrence of halogen deposits, including boron and potassium salts, was sharply disrupted. In this regard, linking the sections of the potassium-boron-bearing zone of the domes is very difficult. The absence of micro- and macrofauna and leading species of spores and pollen in salt deposits, the unreliability of linking salts according to their lithology required the development of correlation characteristics for halogen dome rocks

Anhydrite horizons, which are found in the cores of all salt domes, are taken as markers. The ratio of barium to strontium was used to correlate anhydrites. Based on the nature of the distribution of barium and strontium, the main anhydrite horizon was identified, which is of paramount importance in establishing the identity of the sections of the salt deposits of the domes (Diarov, 2003: 220).





УСЛОВНЫЕ ОБОЗНАЧЕНИЯ

- |  |   |  |           |  |  |
|--|---|--|-----------|--|--|
|  | Г А И Т                                     |  | КАРНАЛАИТ |  | ПРЕВРАЩЕНСКИТ  |
|  | АНГИДРИТ                                    |  | СЛЫБИН    |  | АШЕРИТ   |
|  | ГИПС ВЕЯЛН                                  |  | ПОЛАНГАИТ |  | БОРЗТЫ   |
|  | КАЛИЙНЫЕ И МАГНИЕВЫЕ СОЛИ                   |  | КИЗЕРИТ   |  | КАЛИБОРЗЫТ   |
|  | ГАИНА КРАСНОБУРОВАЯ (ГАОПЛЕИТЫ)             |  | ЗИСОМИТ   |  | ГИЗБОРАЩИТ   |
|  | ГАИНА ЧЕРНАЯ                                |  | КАИНИТ    |  | СЫЛОБОРЗЫТ   |
|  | ТРИКОСЛАБИТАТОЙ АНГИДРИТ-ГАИНИСТОВАЯ ПОРОДА |  | ГЕРГЕНТ   |  | БУАНИРОВАННЫЕ ПРОСЛОИ СОДЕРЖАЩИЕ ВУАКНОГЕННЫЙ МАТЕРИАЛ |

Fig. 4. Summary stratigraphic section of the Lower Permian field

The deposit was explored underground using a system of mining workings at a horizon of -300m and wells to a depth of 900–950m. Mine shafts and workings can be used during operation. (Fig.5). The ore-bearing strata is rock salt. Within the explored area, 10 sheet-like deposits of boron-potassium salts and six potassium salts, isolated from each other, were identified and explored. Their length ranges from a few hundred meters to 1.5–2.0 km, thickness – 1–2 to tens of meters.



Figure 5 – Schematic geological plan of the 300m horizon of the boron-potassium deposit

The composition of potassium field is predominantly sylvinite. Approved reserves amount to 35 million tons of sylvinite (6.3 million tons of K<sub>2</sub>O). Another 4 million tons of K<sub>2</sub>O are contained in boron-potassium deposits. In terms of the number of explored reserves of potassium salts, the deposit is classified as small. However, it should be taken into account that, firstly, there are real opportunities for significant growth due to additional exploration and, secondly, the field has been opened by a mine and production can be carried out now

As you know, one of the types of potash fertilizers is raw ground sylvinite. Provided that there are 50% losses during production and the mine capacity is 500 thousand tons. of sylvinite per year (140 thousand tons of 100% KI), the enterprise can operate for 35 years, and taking into account the increase in reserves, even longer. In parallel with the processing of sylvinite deposits, it is possible to mine carnallite and bischofite-carnallite ores. The predicted K<sub>2</sub>O resources throughout the Indera dome are estimated at 9 million tons in categories (P1) and 192 million tons (P2). The resources of magnesium chloride (MgCl<sub>2</sub>) are 6 million tons (P1) and 120 million tons (P2).

*This research is funded by the Science Committee of the Ministry of Science and Higher Education of the Republic of Kazakhstan (grant No. AP14870070)”*

## **Conclusion**

1. The facile complex of salt rocks is exposed in the area of the boron-potassium field of the Inder uplift. Among them, two main, most common varieties of rocks stand out, between which mutual transitions are outlined, namely syvin - halite polyhalite and carnallite – kieserite. The chemical and mineralogical composition of these rocks, both along the strike of the layers and especially in the vertical section, varies within wide limits, but at the same time there are certain patterns of relationships between the composition of minerals.

2. In this case, the chemical and mineralogical characteristics of salt rocks from wells are presented, and a change in the composition of salt rocks occurs with their transition to essentially carnallite rocks with bischofite.

3. The total thickness of the entire complex of salt rocks discovered in the area is estimated at 750 - 800 m. In the recumbent side of the boron-potassium field, there are stratigraphically younger rocks, and in the hanging side there are more ancient ones. This general rule must be taken into account not only in general stratigraphic constructions, but also when comparing different horizons of salt rocks exposed in the deposit.

4. Based on data from underground mine workings the internal salt tectonics of the field is distinguished by the exceptional consistency of the general direction of strike of both the entire structure as a whole, as well as the features that compose it. This is due to the proximity of the location of the monoclinical structure under consideration to the marginal part of the salt dome uplift, as well as the basal anhydrite of the upper cycle of salt accumulation.

5. The productive stratum is characterized by a complex mineral composition and is composed of sylvinites, polyhalite, kieserite, carnallite and bischofite rocks. In many cases, potassium salts have mixed compositions. The most common boron minerals are hydroboracite, calibrate, preobrazhenskite, boracite, etc. The composition of potassium deposits is predominantly sylvinite. There is a possibility of increasing the deposit's reserves through additional exploration.

## **REFERENCES**

- Aksenov E.M., Vedernikov N.N., Chuprina N.S., Ryabikin V.V. (2000). *Agrochemical and Mining Raw Materials at the Turn of the 21st Century: Current Status and Development Prospects // Mineral Resources of Russia*. — Moscow, 2000. — No. 5–6.
- Bocharov V.M., Khalturina I.I. (2004). *On the Formation of Various Complexes of Potassium-Magnesium Salts in the Caspian Evaporite Bocharov V.M., Tukhfatov Zh.K. Mining-Chemical Raw Materials of Northern Caspian (AMR RK) // Development // Forecasting and Exploration of Mining and Chemical Raw Materials*. — Moscow: Nedra, 1990. — Pp. 6–12.
- Diarov M.D., Serikov T. (2000). *Formation Patterns of Boron-Salt Ore Deposits*. — Almaty. — 220 p.
- Filko A.S. (1981). *State of the Mineral Resource Base of the Agro-Industrial Complex of the USSR and Main Directions for Its Diarov M.D., Tukhfatov K., Utarbaev G.S. Main Patterns of Halogen Boron Accumulation in the History of the Earth // Major Problems of Salt Accumulation*. — Moscow: Nauka, 1981. — Pp. 101–109.
- Formation // *Structure and Conditions of Formation of Potassium Salt Deposits*. — Novosibirsk: Nauka, 1981. — Pp. 139–144.
- “*Geology of the Regions of the Caspian and Aral Seas*” — Almaty: Kazakhstan Geological Society “KazGEO”, 2004. — Pp. 347–356.
- Gorbov A.F. (1973). *The Caspian Potassium Basin // Deposits of Potassium Salts in the USSR*. — Leningrad: Nedra, 1973. — Pp. 70–104.
- Ivanov A.A., Voronova M.L. (1972). *Evaporite Formations*. — Moscow: Nedra, 1972. — 328 p.
- Korobov S.S. (1963). *On the Origin of Boron Mineralization // Mineral Raw Materials*. Moscow: Gosgeoltekhizdat, 1963. — Pp. 45–47.
- Khalturina I.I., Bocharov V.M., Avrova N.P. (1985). *Borates of the Caspian Evaporite Formation and Their Genesis*. Dep. — KazNIINTI, 1985. — No. 845. — 215 p.
- Khalturina I.I. (1968). *On Mineral Formation in Evaporite Rocks // Chemical and Mining-Chemical Raw Materials of Kazakhstan*. — Alma-Ata: Nauka, 1968. — Pp. 23–31.
- Korenevsky S.M., Voronova M.L. (1979). *Geology and Formation Conditions of Potassium Deposits in the Caspian Syncline and Lisitsyn A.E., Diarov M.D., Ozol A.A. Boron-Bearing Formations and Industrial Types of*

- Boron Deposits // Exploration and Conservation of Subsoil Resources. — Moscow, 1979. — No. 11.  
Southern Pre-Ural Trough. — Moscow: Nedra, 1966. — 297 p.
- Tikhvinsky I.N. (1976). Distribution Patterns of Potassium Salts in the Pre-Ural and Caspian Basin // Soviet Geology. 1976. — No. 2. — Pp. 102–114.
- Tikhvinsky I.N. (1985). Key Problems in the Development of the Mineral Salt Raw Material Base in the USSR // Natural Soda and Dawsonite Deposits in the USSR. — Moscow: Nauka, 1985. — Pp. 15–20.
- Valyashko M.G. Genesis and Prospecting of Borate Deposits Associated with Potassium Salt Deposits. — Moscow: MSU. — 395 p.
- Nevoln N.V. (1958). Tectonics of the Caspian Depression // Geology of Oil and Gas. 1958. — No. 9. — Pp. 4–9.
- Yarzhensky Ya. Ya. (1984). Boron-Bearing Evaporite Rocks. — Novosibirsk: Nauka, 1984. — 81 p.
- Zhiyenkulova L., Yessenamanova M.C., Jexenov M.K., Koroleva E.G., Nurbayeva F. (2024). Ecological and limnological research of the sustainability of the ecosystem of lake Inder//NEWS of academy of the republic of Kazakhstan, series of geology and technical sciences, 1 (463) January-February 2024. — Almaty, Nas RK. — Pp.111–127.
- Safety rules for mining and processing of solid minerals (approved by order of the Federal Service for Environmental, Technological and Nuclear Supervision dated December 11, 2013. — No. 599.



## CONTENT

<b>A.E. Abetov, A.A. Auyesbek</b> GEOLOGICAL-GEOPHYSICAL CRITERIA OF THE JEZKAZGAN ORE DISTRICT IN CENTRAL KAZAKHSTAN.....	6
<b>K. Akishev, K. Aryngazin, A. Tleulessov, L. Bulyga, V. Stanevich</b> THE USE OF SIMULATION MODELING IN CALCULATING THE PRODUCTIVITY OF THE TECHNOLOGICAL SYSTEM FOR THE PRODUCTION OF BUILDING PRODUCTS WITH FILLERS FROM MAN-MADE WASTE.....	22
<b>V.V. Gerasidi, R.G. Dubrovin, V.V. Kukartsev, T.A. Panfilova, G.V. Stas</b> BOOST SYSTEM DIAGNOSTIC PARAMETERS OF COHERENT GAS PISTON INSTALLATIONS OF MINING ENTERPRISES.....	33
<b>E.M. Elekeev, B.P. Stepanov</b> TO THE ISSUE OF EFFICIENCY OF APPLICATION OF THE SAFETY CONTROL PROGRAM AT NUCLEAR FACILITIES.....	48
<b>A.I. Epikhin, A.A. Stupina, I.A. Panfilov, V.V. Bukhtoyarov, N.A. Shepeta</b> DETERMINANTS FOR ASSESSING THE ENERGY EFFICIENCY OF A COAL MINING ENTERPRISE.....	61
<b>E.A. Efremenkov, E.S. Chavrov, E.P. Khaleyeva, V.V. Tynchenko</b> EVALUATION OF TECHNIQUES FOR DETERMINING THE LOADING OF A CYCLOIDAL SATELLITE ROLLING BEARING.....	72
<b>Zh.A. Zhanabayeva, K.T. Narbayeva, G.K. Ismailova, M.S. Ospanova, J. Rodrigo-Illarri</b> ASSESSMENT OF THE RESERVOIRS IMPACT ON THE MAXIMUM RUNOFF OF THE SYRDARYA RIVER.....	85
<b>M.K. Jexenov, Zh.K. Tukhfatov, E.K. Bektay, R.Sh. Abdinov, G.S. Turysbekova</b> STRUCTURAL-TECHTONIC AND MINERALOGICAL STRUCTURE OF INDER LIFTING FIELD, MINING AND CHEMICAL RAW MATERIALS IN ATYRAU REGION.....	96
<b>G.M. Iskaliyeva<sup>1,2*</sup>, N.K. Sydyk<sup>1</sup>, A.K. Kalybayeva<sup>1,3</sup>, M.S. Sagat<sup>1</sup>, A. Samat</b> USE OF WATER INDICES FOR WATERBODIES IN THE ESIL WATER MANAGEMENT BASIN.....	117
<b>Z.M. Kerimbekova, A.A. Tashimova, G.I. Issayev, E.K. Ibragimova, M.Zh. Makhambetov</b> CALCULATION OF ENVIRONMENTAL AND ECONOMIC DAMAGE CAUSED BY CURRENT SYSTEMS OF SOLID WASTE MOVEMENT IN OIL PRODUCTION..	131
<b>M.Zh. Makhambetov, R. Izimova, G.I. Issayev, N.A. Akhmetov, E.K. Ibragimova</b> ECOLOGICAL-GEOLOGICAL ASSESSMENT OF TECHNOGENICALLY DISTURBED TERRITORIES OF OIL FIELDS OF THE ATYRAU REGION.....	143

<b>A.D. Mekhtiyev, V.V. Yugay, Y.G. Neshina, N.B. Kaliaskarov, P. Madi</b> FIBER-OPTIC SYSTEM FOR CONTROLLING OPEN PIT SIDE ROCK DISPLACEMENT.....	157
<b>A.S. Mussina, G.U. Baitasheva, B.S. Zakirov, Ye.P. Gorbulicheva</b> CONDITIONS FOR PREPARING THE SURFACE OF CONTACT PARTS FOR WETTIBILITY WITH MERCURY.....	168
<b>A.N. Muta, R.B. Baimakhan, G.I. Salgarayeva, N. Kurmanbekkyzy, A. Tileikhan</b> STUDY OF THE STRENGTH PROPERTIES OF SOILS COMPOSING THE GEOLOGICAL STRUCTURE OF THE KOK TOBE MOUNTAIN.....	185
<b>B. Mukhambetov, B. Nasiyev, Zh. Kadasheva, R. Abdinov, R. Meranzova</b> ADAPTABILITY OF KOCHIA PROSTRATA (L.) SCHRAD AND CAMPHOROSMA MONSPELIACA AGRICULTURAL ECOSYSTEMS ON SALINE LANDS OF THE NORTHERN CASPIAN DESERT.....	197
<b>M. Nurpeisova, G. Dzhangulova, O. Kurmanbaev, Z. Sarsembekova, A. Ormanbekova, Y.Kh. Kakimzhanov</b> CREATION OF GEODETIC REFERENCE NETWORK FOR MONITORING TRANSPORT INTERCHANGES IN SEISMIC AREAS.....	209
<b>B.T. Ratov, V.L. Khomenko, A.E. Kuttybayev, K.S. Togizov, Z.G. Utepov</b> INNOVATIVE DRILL BIT TO IMPROVE THE EFFICIENCY OF DRILLING OPERATIONS AT URANIUM DEPOSITS IN KAZAKHSTAN.....	224
<b>A.A.Tashimova, G.I. Issayev, Z.M. Kerimbekova, E.K. Ibragimova, A.M. Bostanova</b> ANALYSIS OF THE RESOURCE POTENTIAL OF SOLID OIL PRODUCTION WASTE.....	237
<b>M.K. Tynykulov, O.D. Shoykin, S.O. Kosanov, M.B. Khusainov, Zh.G. Ibraybekov</b> BIOREMEDIATION OF ZONAL SOILS IN AYIRTAY DISTRICT OF NORTH KAZAKHSTAN REGION.....	246
<b>A.S. Urazaliyev, D.A. Shoganbekova, R. Shults, M.S. Kozhakhmetov, G.M. Iskaliyeva</b> INVESTIGATION OF LSMSA APPROACH IN LOCAL GEOID MODELING.....	261

## **Publication Ethics and Publication Malpractice in the journals of the National Academy of Sciences of the Republic of Kazakhstan**

For information on Ethics in publishing and Ethical guidelines for journal publication see <http://www.elsevier.com/publishingethics> and <http://www.elsevier.com/journal-authors/ethics>.

Submission of an article to the National Academy of Sciences of the Republic of Kazakhstan implies that the work described has not been published previously (except in the form of an abstract or as part of a published lecture or academic thesis or as an electronic preprint, see <http://www.elsevier.com/postingpolicy>), that it is not under consideration for publication elsewhere, that its publication is approved by all authors and tacitly or explicitly by the responsible authorities where the work was carried out, and that, if accepted, it will not be published elsewhere in the same form, in English or in any other language, including electronically without the written consent of the copyright-holder. In particular, translations into English of papers already published in another language are not accepted.

No other forms of scientific misconduct are allowed, such as plagiarism, falsification, fraudulent data, incorrect interpretation of other works, incorrect citations, etc. The National Academy of Sciences of the Republic of Kazakhstan follows the Code of Conduct of the Committee on Publication Ethics (COPE), and follows the COPE Flowcharts for Resolving Cases of Suspected Misconduct ([http://publicationethics.org/files/u2/New\\_Code.pdf](http://publicationethics.org/files/u2/New_Code.pdf)). To verify originality, your article may be checked by the originality detection service Cross Check <http://www.elsevier.com/editors/plagdetect>.

The authors are obliged to participate in peer review process and be ready to provide corrections, clarifications, retractions and apologies when needed. All authors of a paper should have significantly contributed to the research.

The reviewers should provide objective judgments and should point out relevant published works which are not yet cited. Reviewed articles should be treated confidentially. The reviewers will be chosen in such a way that there is no conflict of interests with respect to the research, the authors and/or the research funders.

The editors have complete responsibility and authority to reject or accept a paper, and they will only accept a paper when reasonably certain. They will preserve anonymity of reviewers and promote publication of corrections, clarifications, retractions and apologies when needed. The acceptance of a paper automatically implies the copyright transfer to the National Academy of Sciences of the Republic of Kazakhstan.

The Editorial Board of the National Academy of Sciences of the Republic of Kazakhstan will monitor and safeguard publishing ethics.

Правила оформления статьи для публикации в журнале смотреть на сайте:

**[www:nauka-nanrk.kz](http://www.nauka-nanrk.kz)**

**ISSN 2518-1483 (Online), ISSN 2224-5227 (Print)**

**<http://geolog-technical.kz/en/archive/>**

Подписано в печать 15.08.2024.

Формат 60x88<sup>1</sup>/<sub>8</sub>. Бумага офсетная. Печать - ризограф.

15,0 п.л. Тираж 300. Заказ 4.