

ISSN 2518-170X (Online),
ISSN 2224-5278 (Print)

ҚАЗАҚСТАН РЕСПУБЛИКАСЫ
ҰЛТТЫҚ ҒЫЛЫМ АКАДЕМИЯСЫНЫҢ
Satbayev University

Х А Б А Р Л А Р Ы

ИЗВЕСТИЯ

НАЦИОНАЛЬНОЙ АКАДЕМИИ НАУК
РЕСПУБЛИКИ КАЗАХСТАН
Satbayev University

NEWS

OF THE ACADEMY OF SCIENCES
OF THE REPUBLIC OF KAZAKHSTAN
Satbayev University

SERIES
OF GEOLOGY AND TECHNICAL SCIENCES

2 (446)

MARCH – APRIL 2021

THE JOURNAL WAS FOUNDED IN 1940

PUBLISHED 6 TIMES A YEAR

ALMATY, NAS RK

NAS RK is pleased to announce that News of NAS RK. Series of geology and technical sciences scientific journal has been accepted for indexing in the Emerging Sources Citation Index, a new edition of Web of Science. Content in this index is under consideration by Clarivate Analytics to be accepted in the Science Citation Index Expanded, the Social Sciences Citation Index, and the Arts & Humanities Citation Index. The quality and depth of content Web of Science offers to researchers, authors, publishers, and institutions sets it apart from other research databases. The inclusion of News of NAS RK. Series of geology and technical sciences in the Emerging Sources Citation Index demonstrates our dedication to providing the most relevant and influential content of geology and engineering sciences to our community.

Қазақстан Республикасы Ұлттық ғылым академиясы "ҚР ҰҒА Хабарлары. Геология және техникалық ғылымдар сериясы" ғылыми журналының Web of Science-тің жаңаланған нұсқасы Emerging Sources Citation Index-те индекстелуге қабылданғанын хабарлайды. Бұл индекстелу барысында Clarivate Analytics компаниясы журналды одан әрі the Science Citation Index Expanded, the Social Sciences Citation Index және the Arts & Humanities Citation Index-ке қабылдау мәселесін қарастыруда. Web of Science зерттеушілер, авторлар, баспашылар мен мекемелерге контент тереңдігі мен сапасын ұсынады. ҚР ҰҒА Хабарлары. Геология және техникалық ғылымдар сериясы Emerging Sources Citation Index-ке енуі біздің қоғамдастық үшін ең өзекті және беделді геология және техникалық ғылымдар бойынша контентке адалдығымызды білдіреді.

НАН РК сообщает, что научный журнал «Известия НАН РК. Серия геологии и технических наук» был принят для индексирования в Emerging Sources Citation Index, обновленной версии Web of Science. Содержание в этом индексировании находится в стадии рассмотрения компанией Clarivate Analytics для дальнейшего принятия журнала в the Science Citation Index Expanded, the Social Sciences Citation Index и the Arts & Humanities Citation Index. Web of Science предлагает качество и глубину контента для исследователей, авторов, издателей и учреждений. Включение Известия НАН РК. Серия геологии и технических наук в Emerging Sources Citation Index демонстрирует нашу приверженность к наиболее актуальному и влиятельному контенту по геологии и техническим наукам для нашего сообщества.

Б а с р е д а к т о р
экон. ғ. докторы, профессор, ҚР ҰҒА академигі
И.К. Бейсембетов

Бас редактордың орынбасарлары:
Жолтаев Г.Ж. геол.-мин. ғ. докторы, проф.
Сыздықов А.Х. тех. ғ. кандидаты, доцент

Р е д а к ц и я а л қ а с ы:

Абаканов Т.Д. проф. (Қазақстан)
Абишева З.С. проф., академик (Қазақстан)
Абсадыков Б.Н. проф., корр.-мүшесі (Қазақстан)
Агабеков В.Е. академик (Беларусь)
Алиев Т. проф., академик (Әзірбайжан)
Бакиров А.Б. проф. (Қырғызстан)
Буктуков Н.С. проф., академик (Қазақстан)
Булат А.Ф. проф., академик (Украина)
Ганиев И.Н. проф., академик (Тәжікстан)
Грэвис Р.М. проф. (АҚШ)
Жарменов А.А. проф., академик (Қазақстан)
Конторович А.Э. проф., академик (Ресей)
Курскеев А.К. проф., академик (Қазақстан)
Курчавов А.М. проф. (Ресей)
Медеу А.Р. проф., академик (Қазақстан)
Оздоев С.М. проф., академик (Қазақстан)
Постолатий В. проф., академик (Молдова)
Степанец В.Г. проф. (Германия)
Штейнер М. проф. (Германия)

«ҚР ҰҒА Хабарлары. Геология және техникалық ғылымдар сериясы».

ISSN 2518-170X (Online),
ISSN 2224-5278 (Print)

Меншіктенуші: «Қазақстан Республикасының Ұлттық ғылым академиясы» РҚБ (Алматы қ.).

Қазақстан Республикасының Ақпарат және қоғамдық даму министрлігінің Ақпарат комитетінде 29.07.2020 ж. берілген № KZ39VPY00025420 мерзімдік басылым тіркеуіне қойылу туралы куәлік.

Тақырыптық бағыты: *геология және техникалық ғылымдар бойынша мақалалар жариялау.*

Мерзімділігі: жылына 6 рет.

Тиражы: 300 дана.

Редакцияның мекен-жайы: 050010, Алматы қ., Шевченко көш., 28, 219 бөл., тел.: 272-13-19, 272-13-18

<http://www.geolog-technical.kz/index.php/en/>

© Қазақстан Республикасының Ұлттық ғылым академиясы, 2021

Типографияның мекен-жайы: «Аруна» ЖК, Алматы қ., Муратбаева көш., 75.

Главный редактор
доктор экон. наук, профессор, академик НАН РК
И. К. Бейсембетов

Заместители главного редактора:
Жолтаев Г.Ж. проф., доктор геол.-мин. наук
Сыздыков А.Х. доцент, канд. тех. наук

Редакционная коллегия:
Абаканов Т.Д. проф. (Казахстан)
Абишева З.С. проф., академик (Казахстан)
Абсадыков Б.Н. проф., чл.-корр. (Казахстан)
Агабеков В.Е. академик (Беларусь)
Алиев Т. проф., академик (Азербайджан)
Бакиров А.Б. проф. (Кыргызстан)
Буктуков Н.С. проф., академик (Казахстан)
Булат А.Ф. проф., академик (Украина)
Ганиев И.Н. проф., академик (Таджикистан)
Грэвис Р.М. проф. (США)
Жарменов А.А. проф., академик (Казахстан)
Конторович А.Э. проф., академик (Россия)
Курскеев А.К. проф., академик (Казахстан)
Курчавов А.М. проф. (Россия)
Медеу А.Р. проф., академик (Казахстан)
Оздоев С.М. проф., академик (Казахстан)
Постолатий В. проф., академик (Молдова)
Степанец В.Г. проф. (Германия)
Штейнер М. проф. (Германия)

«Известия НАН РК. Серия геологии и технических наук».

ISSN 2518-170X (Online),
ISSN 2224-5278 (Print)

Собственник: Республиканское общественное объединение «Национальная академия наук Республики Казахстан» (г. Алматы).

Свидетельство о постановке на учет периодического печатного издания в Комитете информации Министерства информации и общественного развития Республики Казахстан № KZ39VPY00025420, выданное 29.07.2020 г.

Тематическая направленность: публикация статей по геологии и техническим наукам.

Периодичность: 6 раз в год.
Тираж: 300 экземпляров.

Адрес редакции: 050010, г. Алматы, ул. Шевченко, 28, оф. 219, тел.: 272-13-19, 272-13-18

<http://www.geolog-technical.kz/index.php/en/>

© Национальная академия наук Республики Казахстан, 2021

Адрес типографии: ИП «Аруна», г. Алматы, ул. Муратбаева, 75.

Editor in chief

doctor of Economics, professor, academician of NAS RK

I. K. Beisembetov

Deputy editors in chief

Zholtayev G.Zh. dr. geol-min. sc., prof.

Syzdykov A.Kh. can. of tech. sc., associate professor

Editorial board:

Abakanov T.D. prof. (Kazakhstan)

Abisheva Z.S. prof., academician (Kazakhstan)

Absadykov B.N. prof., corr. member (Kazakhstan)

Agabekov V.Ye. academician (Belarus)

Aliyev T. prof., academician (Azerbaijan)

Bakirov A.B. prof. (Kyrgyzstan)

Buktukov N.S. prof., academician (Kazakhstan)

Bulat A.F. prof., academician (Ukraine)

Ganiyev I.N. prof., academician (Tadjikistan)

Gravis R.M. prof. (USA)

Zharmenov A.A. prof., academician (Kazakhstan)

Kontorovich A.Ye. prof., academician (Russia)

Kurskeyev A.K. prof., academician (Kazakhstan)

Kurchavov A.M. prof. (Russia)

Medeu A.R. prof., academician (Kazakhstan)

Ozdoyev S.M. prof., academician (Kazakhstan)

Postolatii V. prof., academician (Moldova)

Stepanets V.G. prof. (Germany)

Steiner M. prof. (Germany)

News of the National Academy of Sciences of the Republic of Kazakhstan. Series of geology and technology sciences.

ISSN 2518-170X (Online),

ISSN 2224-5278 (Print)

Owner: RPA "National Academy of Sciences of the Republic of Kazakhstan" (Almaty).

The certificate of registration of a periodical printed publication in the Committee of information of the Ministry of Information and Social Development of the Republic of Kazakhstan No. **KZ39VPY00025420**, issued 29.07.2020.

Thematic scope: *publication of papers on geology and technical sciences.*

Periodicity: 6 times a year.

Circulation: 300 copies.

Editorial address: 28, Shevchenko str., of. 219, Almaty, 050010, tel. 272-13-19, 272-13-18,

<http://www.geolog-technical.kz/index.php/en/>

© National Academy of Sciences of the Republic of Kazakhstan, 2021

Address of printing house: ST "Aruna", 75, Muratbayev str, Almaty.

NEWS

OF THE NATIONAL ACADEMY OF SCIENCES OF THE REPUBLIC OF KAZAKHSTAN

SERIES OF GEOLOGY AND TECHNICAL SCIENCES

ISSN 2224-5278

Volume 2, Number 446 (2021), 15 – 21

<https://doi.org/10.32014/2021.2518-170X.29>**Aang Panji Permana¹, Subagyo Pramumijoyo², Sunarty Suly Eraku³**¹ Geological Engineering Study Program, Earth Science and Technology Department,
Universitas Negeri Gorontalo, Gorontalo, Indonesia;² Geological Engineering Department, Universitas Gadjah Mada, Yogyakarta, Indonesia;³ Geography Education Study Program, Earth Science and Technology Department,
Universitas Negeri Gorontalo, Gorontalo, Indonesia.E-mail: aang@ung.ac.id**MICROFACIES AND DEPOSITIONAL ENVIRONMENT
OF TERTIARY LIMESTONE, GORONTALO PROVINCE, INDONESIA**

Abstract. The research area is located in northern Limboto Lake in Gorontalo Province, which has complex geological characteristics. The geological complexities include stratigraphy and tectonics which influence the formation of the Limboto Basin. Limestone research in the Late Tertiary Limboto Basin is very intriguing to be done because of the lack of research in limestone. Gorontalo limestone outcrops, which become the focus of the research, have a total thickness of 30 meters. The research objective is to analyze facies, microfacies, and depositional environment of tertiary limestone. These two research objectives are attained by using two research methods, namely measured section and petrography analysis. The research result exhibits that there are four Gorontalo limestones facies, including coralline rudstone intercalated with thin mudstone facies, sandy micrite intercession facies, coralline rudstone intercession facies and sandy allochem limestone intercession facies. According to the limestone microfacies standard, the depositional environment of Gorontalo limestone is platform interior restricted (facies zone 8).

Keywords: microfacies, depositional environment, tertiary limestone, Gorontalo.

Introduction. Sulawesi Island has tectonic and geological complexity. This complexity is influenced by the collision of three plates, namely the Eurasian Plate, the Indo-Australian Plate, and the Pacific Plate. The interaction of these three plates causes a striking change from the shape of the Sulawesi island, changing from an archipelago with a convex side towards the Pacific Ocean to the K shape as it is now. The collision of the moving Pacific plate pushes Sulawesi westward along 800 km [1, 2].

Sulawesi complexity makes this island, can be divided into several tectonic provinces including pluton and volcanic rocks composing the West Sulawesi arm, the metamorphic belt composing Central Sulawesi, ophiolites composing East Sulawesi and the continental micro blocks of Banggai-Sula and Buton-Tukang Besi [3, 4].

The north arm of Sulawesi, which is part of the West Sulawesi arm, is also composed of volcanic rock, which is estimated to be of late Paleogene and Neogene origin from the Maluku plate and Sulawesi Sea plate subduction zone [5]. The middle part of the Sulawesi North Arm lies the Limboto plain formed by Limboto Lake and several rivers. The constituent rocks in this basin are limestone. Quaternary limestone spread to the northwest of Lake Limboto with an area of 20 x 4 km² of Pliocene-Pleistocene age and in the west and south an area of 37 x 4 km² of Pleistocene age [6, 7].

The distribution of Quaternary age rocks is closely related to the various forms of morphology and basin shapes produced by the last tectonic process which developed since the time of the Late Miocene epoch, volcanic activity, and denudation processes. Quaternary rock distribution can be known from remote sensing imagery, both with aerial portraits, radar, and Landsat. The alluvial plateau and elevated coral limestone that spread out wide shows the stability of the bedrocks [7, 8].

Limestone research in Lake Limboto has been done by creating a regional geological map. Two limestone formations consist of Clastic Limestone Formation and Coral Limestone Formation. The Pliocene-Pleistocene Clastic Limestone Formation is located in the west of the lake comprising calcarenite, calcirudite and coral limestone with the thickness up to 200 meters. Coral Limestone Formation (Q1)

which is located in the south of the lake is estimated to be Holocene; this reef limestone is uplifted with the main component of coral [9].

Limestone research in Limboto Lake has only been carried out in general by producing regional geological maps. Two limestone formations are Clastic Limestone Formation and Reef Limestone Formation. The Clastic Limestone Formation located in the western lake is Pliocene-Pleistocene lake with calcarenite lithology, calcirudite and coral limestone with thickness up to 200 meters. The Reef Limestone Formation (Q1) found in the south of the lake is estimated to be Holocene in age; this reef limestone is elevated with coral as the main component [9].

Limestone research in the Yosonegoro area produces two facies and microfacies, namely coralline rudstone facies and wackestone-packestone intercession facies with a slope to toe of slope depositional environment [10]. Limestone research in the north of Lake Limboto is carried out due to a lack of research data on Gorontalo limestone. Hence, this research is carried out in detail by taking a more comprehensive approach from the geological aspect so that new findings will be generated. The research aims to analyze microfacies, depositional environments, relative age and paleobathymetry of Gorontalo limestone, which involves microfacies and biostratigraphy analysis methods.

Research Method. The location of the research is the West Limboto District of Gorontalo Regency in the North of Lake Limboto with the geographical location at coordinates (00° 39' 5"- 00° 39' 7.644" North) and (122° 55' 20.833"- 122° 55' 34" East) (figure 1). Materials and research supplies are limestone outcrops with a thickness of up to 30 meters. The research method consists of two stages. The first stage is doing a measured section (MS) using a 1.5 meter interval jacob's staff systematically from the oldest to the youngest rocks [10, 11, 12, 13].

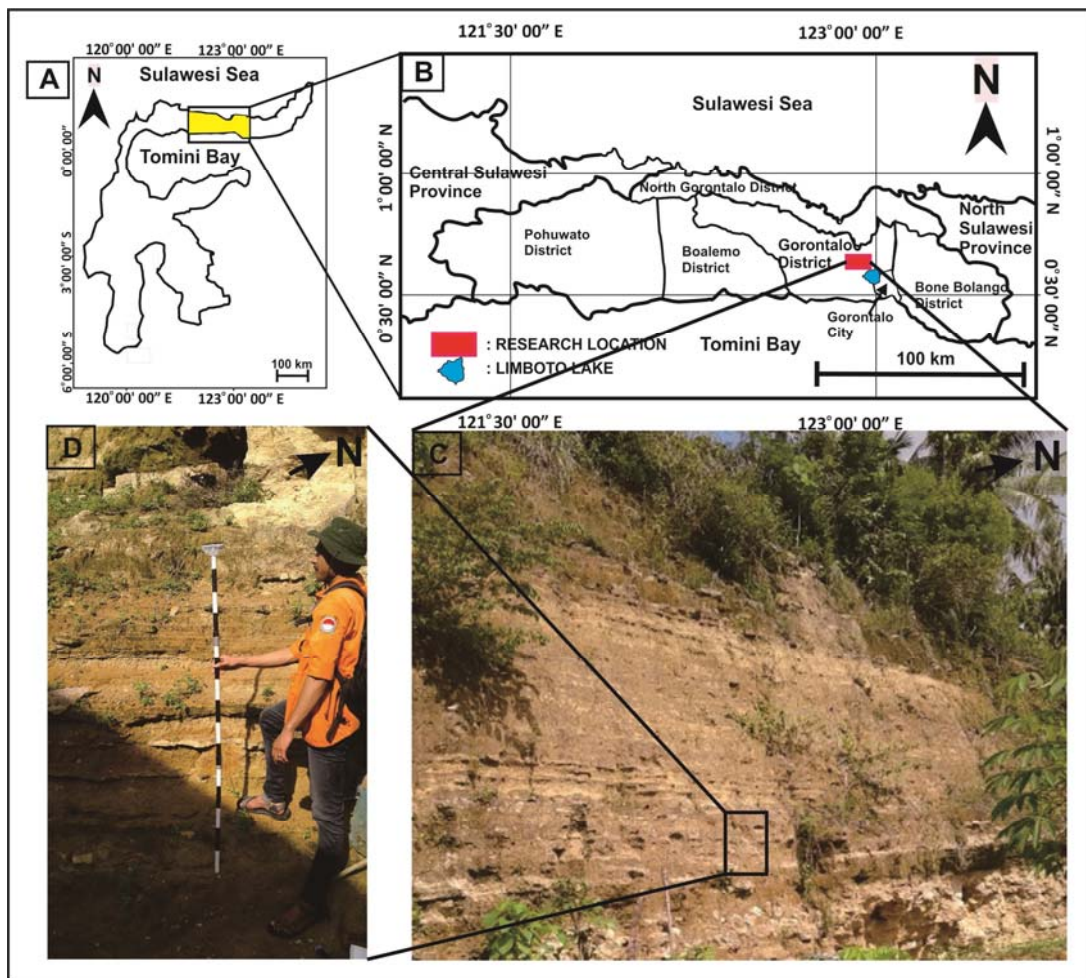


Figure 1 – Research location which is located on the north of Lake Limboto, West Limboto District, Gorontalo Regency. (A) the location of Gorontalo Province on the map of Sulawesi island, (B) the research location on the map of Gorontalo Province, (C) the measuring section location on research location, and (D) the measuring section (MS) uses a jacob's staff

This method is fundamental to know the facies in the study site, including measuring the exact thickness of the facies and taking appropriate samples for petrographic analysis. The next method is the petrographic analysis of a thin section using a 1053 polarization microscope equipped with a computer-connected camera. The petrographic analysis is beneficial in determining microfacies so that the depositional environment can be easily determined [14, 15].

Research Results and Discussion.

A. Facies and Microfacies. MS measurements are carried out in detail by distinguishing one facies unit to another facies. The reference to differentiate these facies is done by doing field descriptions and petrology based on texture, structure, and composition. Determination of standard microfacies (SMF) in addition to the initial data distribution of facies and sedimentary structures found in the field as well as the detailed composition of petrographic analysis. MS results at the research site contain four facies, namely facies A, B, C, and D (figure 2). Descriptions of the four facies are as follows:

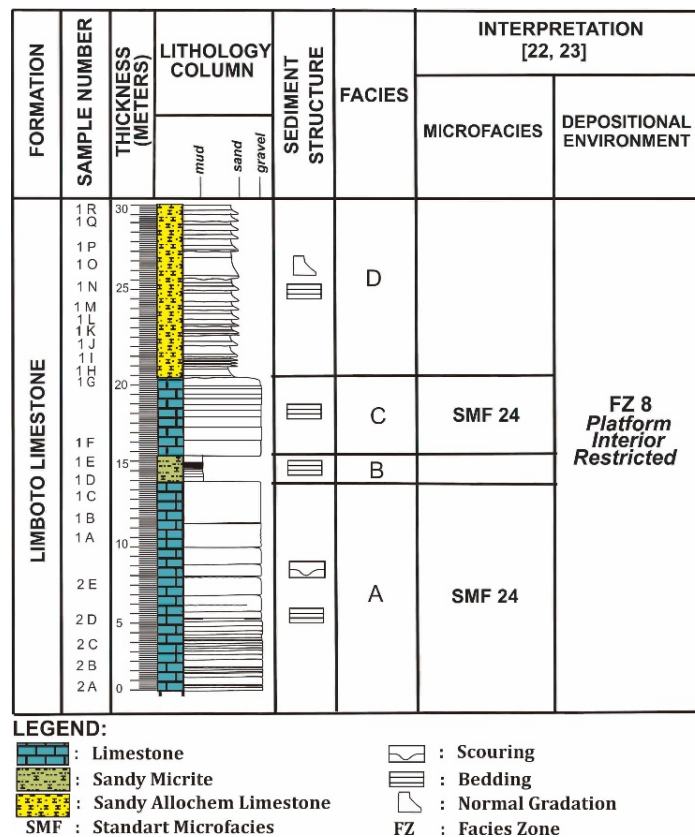


Figure 2 – Lithostratigraphic distribution chart which divides Gorontalo limestone into four facies

Facies A is interpreted as coralline rudstone intercalated with thin mudstone facies [16]. The coralline rudstone intercalated with thin mudstone facies are at the bottom of the lithostratigraphic column. The position of this facies is at intervals of 0-13 meters. This facies is described as brownish-white, grain size > 2 mm, poor sorting, rough fragmental bioclastic texture, open packaging, the connection between grain is floating in the matrix. The bedding structure is thickening upward and the scouring structure is at the top of the contact with the mudstone. The rock composition is composed of coral fragments, micrite, and opaque minerals. The composition of these facies based on petrographic analysis consists of red algae (7%), foraminifera (8%), corals (10%), brachiopods (4%), bryozoa (2%), mollusks (1%), echinoids (1%), and non-skeletal shells in the form of peloids (15%). Granules are embedded in the matrix in the form of carbonate mud (5%) with cementation (30%) in the form of microspar-pseudospar. Found a cavity of vuggy (3%), intercrystalline (10%), intercrystalline (0.5%), and cracks (0.5%); replacement is characterized by the presence of clay minerals (3%) (figure 3).

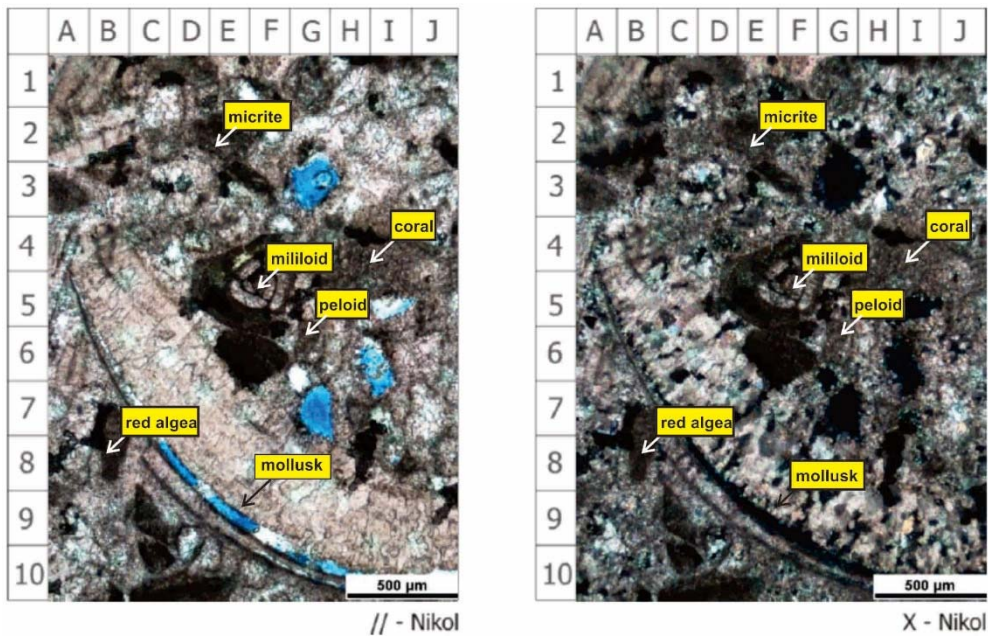


Figure 3 – Petrographic analysis of coralline rudstone samples [16], which is Facies A

Based on the composition of these facies, the type of microfacies is SMF 24 [17, 18]. The reason is that these microfacies are composed of coarse bioclasts and are influenced by slope or imbrication with sparse matrices. The depositional environment for microfacies based on the type of SMF 24 is the restricted interior platform (FZ 8) (figure 4).

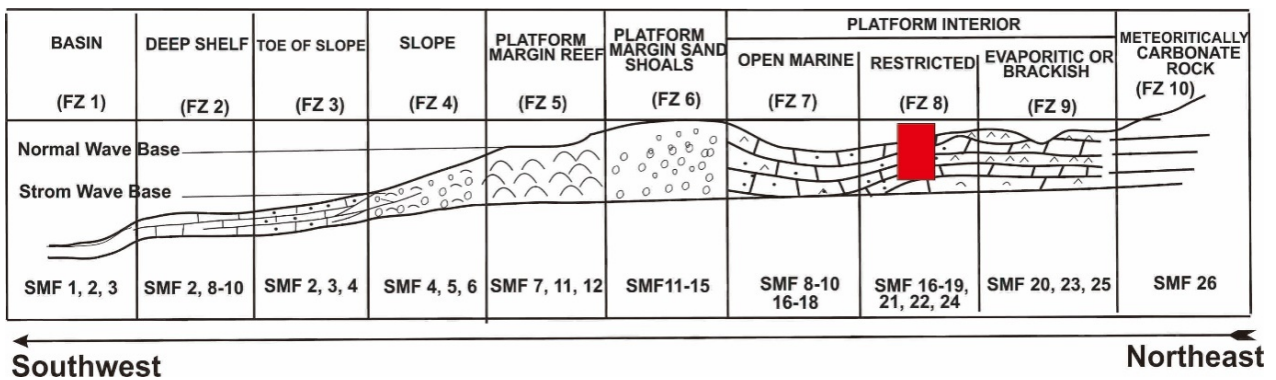


Figure 4 – Gorontalo limestone depositional environment, which is a platform interior restricted (FZ 8) [17, 18]

Facies B is interpreted as sandy micrite intercession facies [19]. This facies is above the coralline rudstone intercalated with thin mudstone facies of the lithostratigraphic column. The position of these facies is at intervals of 13-15 meters. Further, this facies is described as brown, grain-size silt (1/256-1/16 mm), good sorting, closed packaging, composition: micrite and quartz with some rock fragments. The structure of this facies is bedding (thinning upward). The interpretation of depositional energy is high.

The composition of these facies is based on petrographic analysis consisting of small foraminifera (1%), and non-skeletal granules in the form of plagioclase (2%), quartz (3%), hornblende (1%), carbon (7%), opaque minerals (5%), and rock fragments (1%) embedded in the matrix (40%) with cementation (25%) of the cavity in the form of vuggy (5%). Substitution is characterized by the presence of clay minerals (10%) (figure. 5).

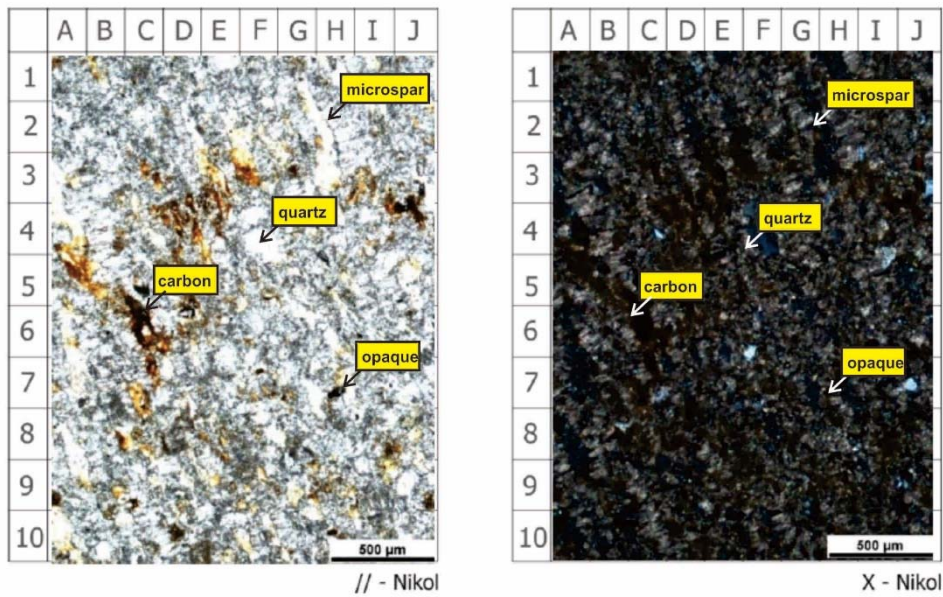


Figure 5 – Petrographic analysis of sandy micrite samples [19], which is Facies B

Facies C is interpreted as coralline rudstone intercession facies [16]. The coralline-rudstone intercession facies are above the sandy micrite intercession facies of the lithostratigraphic column. The position of these facies is at intervals of 15-20.5 meters. This facies description is brownish-white, grain size > 2 mm, poor sorting, rough fragmental bioclastic texture, open packaging, the connection between grains is floating in the matrix. The structure is bedding (thinning upward).

Based on the composition of these facies, the type of microfacies is SMF 24 [17, 18]. The reason is that these microfacies are composed of coarse bioclasts and are influenced by slope or imbrication with sparse matrices. The depositional environment for microfacies based on the type of SMF 24 is the restricted interior platform (FZ 8) (figure 4).

Facies D is interpreted as sandy allochem limestone intercession facies [19]. This facies are above the coralline rudstone intercession facies from the lithostratigraphic column. The position of this facies is at intervals of 20.5-30 meters. This facies description is a light brown, fine-sized grain (1/8-1/4 mm), good sorting, and closed packaging. Further, the structure is bedding (thickening upward) and normal gradation

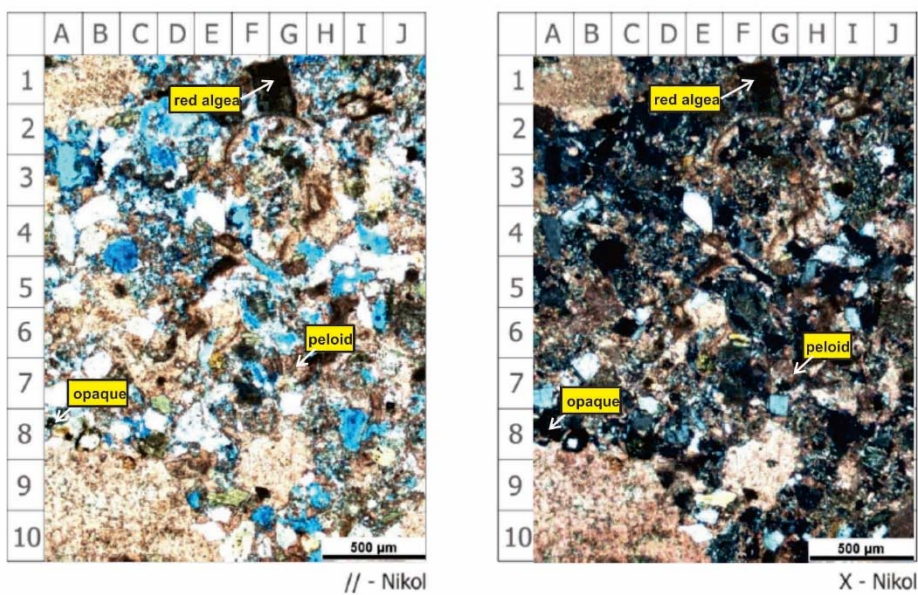


Figure 6 – Petrographic analysis of sandy allochem limestone samples [19], which are Facies D

with the composition of the micrite, quartz, and feldspar. The interpretation of formation energy based on grain size is high.

Moreover, the composition of these facies is based on petrographic analysis consisting of small foraminifera (8%), red algae (2%), echinoids (3%), bryozoa (5%), corals (5%), and large foraminifera (5%). Meanwhile, non-skeletal granules consist of opaque minerals (1%), hornblende (1%), plagioclase (2%), quartz (10%), rock fragments (3%), peloids (7%), carbon (1%), actinolite (1%) embedded in the matrix (13%) in the form of a small amount of carbonate mud and cementation (7%) in the form of calcite spines and clay minerals (2%). Porosity (25%) is vuggy and moldic (figure 6).

Conclusion. The research of microfacies and depositional environments of tertiary limestone, Gorontalo Province, Indonesia yielded several essential points which become the conclusions, including:

1. The facies analysis of tertiary limestone consists of four types of facies, namely coralline rudstone intercalated with thin mudstone facies, sandy micrite intercession facies, coralline rudstone intercession facies and sandy allochem limestone intercession facies.

2. The depositional environment for microfacies based on the type of SMF 24 is the restricted interior platform (FZ 8).

Aang Panji Permana¹, Subagyo Pramumijoyo², Sunarty Suly Eraku³

¹ Образовательная программа «Инженерная геология», Факультет наук о земле и технологий, Государственный университет Горонтало, Горонтало, Индонезия;

² Факультет инженерной геологии, Университет Гаджа Мада, Джокьякарта, Индонезия;

³ Образовательная программа «Географическое образование», Факультет наук о земле и технологий, Государственный университет Горонтало, Горонтало, Индонезия

МИКРОФАЦИАЛЬНАЯ И ОСАДОЧНАЯ СРЕДА ТРЕТИЧНОГО ИЗВЕСТНЯКА, ПРОВИНЦИЯ ГОРОНТАЛО, ИНДОНЕЗИЯ

Аннотация. Район исследований расположен в северном озере Лимбото в провинции Горонтало, которое имеет сложные геологические характеристики. Геологические сложности включают стратиграфию и тектонику, которые влияют на формирование бассейна Лимбото. Исследования известняка в поздне третичном бассейне Лимбото очень интересны из-за отсутствия до сих пор исследований по известняку. Горонтальские известняковые обнажения, ставшие объектом исследования, имеют общую толщину 30 метров. Цель исследования – анализ фациальной, микрофациальной и осадочной среды третичных известняков. Эти две цели исследования достигаются с помощью двух методов исследования, а именно измерительного разреза и петрографического анализа. Результаты исследований показывают, что существует четыре фации горонтало-известняков, в том числе коралловый рудный камень, интеркалированный тонкими аргиллитными фациями, песчаная микритная покровная фация, коралловая рудная покровная фация и песчаная аллохимическая известняковая покровная фация. Согласно стандарту микрофаций известняка, осадочная среда горонтальского известняка ограничена внутри платформы (фациальная зона 8).

Ключевые слова: микрофации, осадочная среда, третичный известняк, Горонтало.

Information about authors:

Dr. Aang Panji Permana, S.T., M.T, Researcher and Senior Lecturer in Geological Engineering Study Program, Earth Science and Technology Department, Faculty of Mathematics and Natural Sciences, Universitas Negeri Gorontalo, Indonesia; aang@ung.ac.id; <https://orcid.org/0000-0002-6865-3564>

Prof. Dr. Ir. Subagyo Pramumijoyo, DEA, Researcher and Professor in Geological Engineering Department, Faculty of Engineering, Universitas Gadjah Mada, Indonesia; bagyo@ugm.ac.id; <https://orcid.org/0000-0001-7524-1122>

Dr. Sunarty Suly Eraku, S.Pd., M.Pd, Researcher and Assoc. Professor in Geography Education Study Program, Earth Science and Technology Department, Faculty of Mathematics and Natural Sciences, Universitas Negeri Gorontalo, Indonesia; sunarty.eraku@ung.ac.id; <https://orcid.org/0000-0002-6819-0184>

REFERENCES

- [1] Katili J.A. (1975) Volcanism and plate tectonics in the Indonesian island arcs // *Tectonophysics*. Vol. 26. P. 165-188.
- [2] Katili J.A. (1975) Past and present geotectonic position of Sulawesi, Indonesia // *Tectonophysics*. Vol. 45. P. 289-322.
- [3] Sukanto R. (1975c) The structure of Sulawesi in the light of plate tectonics // In *The regional conference on the geology and mineral resources of SE Asia*, paper. P. 1-25.
- [4] Hamilton W. (1975) Tectonics of the Indonesia region," in *Geological survey, professional paper 1078*, US. Govern. Printing Office, Washington U.S.G.S professional paper 1078.
- [5] Moss S.J., Wilson M.E.J. (1998) Biogeographic implications of the Tertiary palaeogeographic evolution of Sulawesi and Borneo // In R. Hall and J.D. Holloway, eds., *Biogeography and Geological Evolution of SE Asia*, Backhuys Publishers, Leiden. P. 133-163.
- [6] Katili J.A. (1970) Large transcurrent faults in southeast Asia with special reference to Indonesia // *International Journal of earth Science*. Vol. 59(2). P. 581-600.
- [7] Sukanto R., Ratman N. (2013) Quaternary Rock in Surono and U. Hartono, eds "Geology of Sulawesi", LIPI Press and Geological Survey Center, the Geological Agency of Energy and Mineral Resources Ministry. P. 352.
- [8] Eraku S.S., Permana A.P. (2020) Erosion Hazard Analysis in The Limboto Lake Catchement Area, Gorontalo Province, Indonesia // *News of the National academy of sciences of the Republic of Kazakhstan. Series of Geology and Technical Sciences*. Vol. 3(441). P. 110-116. DOI: <https://doi.org/10.32014/2020.2518-170X.61>
- [9] Bachri S., Partoyo E., Bawono S.S., Sukarna D., Surono and Supandjono J.B. (1997) Regional Geology of Gorontalo, North Sulawesi // *Collection of Research and Mapping Results Papers Centre for Geological Research and Development*. P. 18-30.
- [10] Permana A.P., Pramumijoyo S., Akmaluddin. (2019) Analysis of Microfacies and Depositional Environment of Limestone in Yosonegoro Area, Gorontalo Province, Indonesia // *Bulletin of the Iraq Natural History Museum*. Vol. 15(4). P. 443-454. DOI: <https://doi.org/10.26842/binhm.7.2019.15.4.0443>
- [11] Permana A.P., Pramumijoyo S., Akmaluddin. (2019) Uplift Rate of Gorontalo Limestone (Indonesia) Based on Biostratigraphy Analysis // *News of the National academy of sciences of the Republic of Kazakhstan. Series of Geology and Technical Sciences*. Vol. 6(438). P. 6-11. DOI: <https://doi.org/10.32014/2019.2518-170X.150>
- [12] Permana A.P., Pramumijoyo S., Akmaluddin. (2020) Paleobathymetry Analysis of Limestone in Bongomeme Region Based on Content of Benthic Foraminifera Fossil, Gorontalo District, Indonesia // *Bulletin of the Iraq Natural History Museum*. Vol. 16(1). P. 1-14. DOI: <https://doi.org/10.26842/binhm.7.2020.16.1.0001>
- [13] Compton R.R. (1985) *Geology in the Field*. NewYork: Wiley Press. P. 416.
- [14] Crabtree S.J., Ehrlig R., Prince C. (1984) Evaluation of strategies for segmentation of blue-dyed pores in thin sections of reservoir rocks // *Computer vision, graphics and image processing*. Vol. 28. P. 1-18.
- [15] Dickson J.A.D. (1966) Carbonate identification and genesis revealed by staining // *Sedimentary Petrology Journal*. Vol. 36(2). P. 491-505.
- [16] Embry A.F., Klovan J.E. (1971) A Late Devonian reef tract on northeastern Banks Island, NWT // *Bull. Can. Petroleum Geol.* Vol. 19. P. 730-781.
- [17] Wilson J.L. (1975) *Carbonate Facies in Geologic History*. New York: Springer-Verlag. P. 971.
- [18] Flugel E. (2010) *Microfacies of Carbonate Rocks. Analysis, Interpretation and Application/ 2nd edn*. Berlin, Heidelberg. New York: Springer-Verlag. P. 976.
- [19] Mount J. (1985) Mixed siliciclastic and carbonate sediments: a proposed first-order textural and compositional classification // *Sedimentology*. Vol. 32. P. 435-442.

**Publication Ethics and Publication Malpractice
in the journals of the National Academy of Sciences of the Republic of Kazakhstan**

For information on Ethics in publishing and Ethical guidelines for journal publication see <http://www.elsevier.com/publishingethics> and <http://www.elsevier.com/journal-authors/ethics>.

Submission of an article to the National Academy of Sciences of the Republic of Kazakhstan implies that the described work has not been published previously (except in the form of an abstract or as part of a published lecture or academic thesis or as an electronic preprint, see <http://www.elsevier.com/postingpolicy>), that it is not under consideration for publication elsewhere, that its publication is approved by all authors and tacitly or explicitly by the responsible authorities where the work was carried out, and that, if accepted, it will not be published elsewhere in the same form, in English or in any other language, including electronically without the written consent of the copyright-holder. In particular, translations into English of papers already published in another language are not accepted.

No other forms of scientific misconduct are allowed, such as plagiarism, falsification, fraudulent data, incorrect interpretation of other works, incorrect citations, etc. The National Academy of Sciences of the Republic of Kazakhstan follows the Code of Conduct of the Committee on Publication Ethics (COPE), and follows the COPE Flowcharts for Resolving Cases of Suspected Misconduct (http://publicationethics.org/files/u2/New_Code.pdf). To verify originality, your article may be checked by the Cross Check originality detection service <http://www.elsevier.com/editors/plagdetect>.

The authors are obliged to participate in peer review process and be ready to provide corrections, clarifications, retractions and apologies when needed. All authors of a paper should have significantly contributed to the research.

The reviewers should provide objective judgments and should point out relevant published works which are not yet cited. Reviewed articles should be treated confidentially. The reviewers will be chosen in such a way that there is no conflict of interests with respect to the research, the authors and/or the research funders.

The editors have complete responsibility and authority to reject or accept a paper, and they will only accept a paper when reasonably certain. They will preserve anonymity of reviewers and promote publication of corrections, clarifications, retractions and apologies when needed. The acceptance of a paper automatically implies the copyright transfer to the National Academy of Sciences of the Republic of Kazakhstan.

The Editorial Board of the National Academy of Sciences of the Republic of Kazakhstan will monitor and safeguard publishing ethics.

Правила оформления статьи для публикации в журнале смотреть на сайте:

www.nauka-nanrk.kz

ISSN 2518-170X (Online), ISSN 2224-5278 (Print)

<http://www.geolog-technical.kz/index.php/en/>

Редакторы *Д. С. Аленов, М. С. Ахметова, Р. Ж. Мрзабаева*
Верстка *Д. А. Абдрахимовой*

Подписано в печать 15.04.2021.

Формат 70x881/8. Бумага офсетная. Печать – ризограф.
13,0 п.л. Тираж 300. Заказ 2.