

ISSN 2518-170X (Online),
ISSN 2224-5278 (Print)

ҚАЗАҚСТАН РЕСПУБЛИКАСЫ
ҰЛТТЫҚ ҒЫЛЫМ АКАДЕМИЯСЫНЫҢ
Қ. И. Сәтпаев атындағы Қазақ ұлттық техникалық зерттеу университеті

Х А Б А Р Л А Р Ы

ИЗВЕСТИЯ

НАЦИОНАЛЬНОЙ АКАДЕМИИ НАУК
РЕСПУБЛИКИ КАЗАХСТАН
Қазақстан Республикасының Ғылым Академиясының
Қ. И. Сәтпаев атындағы Қазақ ұлттық техникалық зерттеу университеті

NEWS

OF THE ACADEMY OF SCIENCES
OF THE REPUBLIC OF KAZAKHSTAN
Kazakh national research technical university
named after K. I. Satpayev

**SERIES
OF GEOLOGY AND TECHNICAL SCIENCES**

1 (433)

JANUARY – FEBRUARY 2019

THE JOURNAL WAS FOUNDED IN 1940

PUBLISHED 6 TIMES A YEAR

ALMATY, NAS RK

NAS RK is pleased to announce that News of NAS RK. Series of geology and technical sciences scientific journal has been accepted for indexing in the Emerging Sources Citation Index, a new edition of Web of Science. Content in this index is under consideration by Clarivate Analytics to be accepted in the Science Citation Index Expanded, the Social Sciences Citation Index, and the Arts & Humanities Citation Index. The quality and depth of content Web of Science offers to researchers, authors, publishers, and institutions sets it apart from other research databases. The inclusion of News of NAS RK. Series of geology and technical sciences in the Emerging Sources Citation Index demonstrates our dedication to providing the most relevant and influential content of geology and engineering sciences to our community.

Қазақстан Республикасы Ұлттық ғылым академиясы "ҚР ҰҒА Хабарлары. Геология және техникалық ғылымдар сериясы" ғылыми журналының Web of Science-тің жаңаланған нұсқасы Emerging Sources Citation Index-те индекстелуге қабылданғанын хабарлайды. Бұл индекстелу барысында Clarivate Analytics компаниясы журналды одан әрі the Science Citation Index Expanded, the Social Sciences Citation Index және the Arts & Humanities Citation Index-ке қабылдау мәселесін қарастыруда. Web of Science зерттеушілер, авторлар, баспашылар мен мекемелерге контент тереңдігі мен сапасын ұсынады. ҚР ҰҒА Хабарлары. Геология және техникалық ғылымдар сериясы Emerging Sources Citation Index-ке енуі біздің қоғамдастық үшін ең өзекті және беделді геология және техникалық ғылымдар бойынша контентке адалдығымызды білдіреді.

НАН РК сообщает, что научный журнал «Известия НАН РК. Серия геологии и технических наук» был принят для индексирования в Emerging Sources Citation Index, обновленной версии Web of Science. Содержание в этом индексировании находится в стадии рассмотрения компанией Clarivate Analytics для дальнейшего принятия журнала в the Science Citation Index Expanded, the Social Sciences Citation Index и the Arts & Humanities Citation Index. Web of Science предлагает качество и глубину контента для исследователей, авторов, издателей и учреждений. Включение Известия НАН РК. Серия геологии и технических наук в Emerging Sources Citation Index демонстрирует нашу приверженность к наиболее актуальному и влиятельному контенту по геологии и техническим наукам для нашего сообщества.

Б а с р е д а к т о р ы
э. ғ. д., профессор, ҚР ҰҒА академигі

И.К. Бейсембетов

Бас редакторының орынбасары

Жолтаев Г.Ж. проф., геол.-мин. ғ. докторы

Р е д а к ц и я а л қ а с ы:

Абаканов Т.Д. проф. (Қазақстан)
Абишева З.С. проф., академик (Қазақстан)
Агабеков В.Е. академик (Беларусь)
Алиев Т. проф., академик (Әзірбайжан)
Бакиров А.Б. проф., (Қырғыстан)
Беспәев Х.А. проф. (Қазақстан)
Бишимбаев В.К. проф., академик (Қазақстан)
Буктуков Н.С. проф., академик (Қазақстан)
Булат А.Ф. проф., академик (Украина)
Ганиев И.Н. проф., академик (Тәжікстан)
Грэвис Р.М. проф. (АҚШ)
Ерғалиев Г.К. проф., академик (Қазақстан)
Жуков Н.М. проф. (Қазақстан)
Қожахметов С.М. проф., академик (Қазақстан)
Конторович А.Э. проф., академик (Ресей)
Курскеев А.К. проф., академик (Қазақстан)
Курчавов А.М. проф., (Ресей)
Медеу А.Р. проф., академик (Қазақстан)
Мұхамеджанов М.А. проф., корр.-мүшесі (Қазақстан)
Нигматова С.А. проф. (Қазақстан)
Оздоев С.М. проф., академик (Қазақстан)
Постолатий В. проф., академик (Молдова)
Ракишев Б.Р. проф., академик (Қазақстан)
Сейтов Н.С. проф., корр.-мүшесі (Қазақстан)
Сейтмуратова Э.Ю. проф., корр.-мүшесі (Қазақстан)
Степанец В.Г. проф., (Германия)
Хамфери Дж.Д. проф. (АҚШ)
Штейнер М. проф. (Германия)

«ҚР ҰҒА Хабарлары. Геология мен техникалық ғылымдар сериясы».

ISSN 2518-170X (Online),

ISSN 2224-5278 (Print)

Меншіктенуші: «Қазақстан Республикасының Ұлттық ғылым академиясы» РҚБ (Алматы қ.).

Қазақстан республикасының Мәдениет пен ақпарат министрлігінің Ақпарат және мұрағат комитетінде
30.04.2010 ж. берілген №10892-Ж мерзімдік басылым тіркеуіне қойылу туралы куәлік.

Мерзімділігі: жылына 6 рет.

Тиражы: 300 дана.

Редакцияның мекенжайы: 050010, Алматы қ., Шевченко көш., 28, 219 бөл., 220, тел.: 272-13-19, 272-13-18,
<http://www.geolog-technical.kz/index.php/en/>

© Қазақстан Республикасының Ұлттық ғылым академиясы, 2019

Редакцияның Қазақстан, 050010, Алматы қ., Қабанбай батыра көш., 69а.

мекенжайы: Қ. И. Сәтбаев атындағы геология ғылымдар институты, 334 бөлме. Тел.: 291-59-38.

Типографияның мекенжайы: «Аруна» ЖК, Алматы қ., Муратбаева көш., 75.

Г л а в н ы й р е д а к т о р
д. э. н., профессор, академик НАН РК

И. К. Бейсембетов

Заместитель главного редактора

Жолтаев Г.Ж. проф., доктор геол.-мин. наук

Р е д а к ц и о н н а я к о л л е г и я:

Абаканов Т.Д. проф. (Казахстан)
Абишева З.С. проф., академик (Казахстан)
Агабеков В.Е. академик (Беларусь)
Алиев Т. проф., академик (Азербайджан)
Бакиров А.Б. проф., (Кыргызстан)
Беспаяев Х.А. проф. (Казахстан)
Бишимбаев В.К. проф., академик (Казахстан)
Буктуков Н.С. проф., академик (Казахстан)
Булат А.Ф. проф., академик (Украина)
Ганиев И.Н. проф., академик (Таджикистан)
Грэвис Р.М. проф. (США)
Ергалиев Г.К. проф., академик (Казахстан)
Жуков Н.М. проф. (Казахстан)
Кожаметов С.М. проф., академик (Казахстан)
Конторович А.Э. проф., академик (Россия)
Курскеев А.К. проф., академик (Казахстан)
Курчавов А.М. проф., (Россия)
Медеу А.Р. проф., академик (Казахстан)
Мухамеджанов М.А. проф., чл.-корр. (Казахстан)
Нигматова С.А. проф. (Казахстан)
Оздоев С.М. проф., академик (Казахстан)
Постолатий В. проф., академик (Молдова)
Ракишев Б.Р. проф., академик (Казахстан)
Сейтов Н.С. проф., чл.-корр. (Казахстан)
Сейтмуратова Э.Ю. проф., чл.-корр. (Казахстан)
Степанец В.Г. проф., (Германия)
Хамфери Дж.Д. проф. (США)
Штейнер М. проф. (Германия)

«Известия НАН РК. Серия геологии и технических наук».

ISSN 2518-170X (Online),

ISSN 2224-5278 (Print)

Собственник: Республиканское общественное объединение «Национальная академия наук Республики Казахстан (г. Алматы)

Свидетельство о постановке на учет периодического печатного издания в Комитете информации и архивов Министерства культуры и информации Республики Казахстан №10892-Ж, выданное 30.04.2010 г.

Периодичность: 6 раз в год

Тираж: 300 экземпляров

Адрес редакции: 050010, г. Алматы, ул. Шевченко, 28, ком. 219, 220, тел.: 272-13-19, 272-13-18,
<http://nauka-nanrk.kz/geology-technical.kz>

© Национальная академия наук Республики Казахстан, 2019

Адрес редакции: Казахстан, 050010, г. Алматы, ул. Кабанбай батыра, 69а.

Институт геологических наук им. К. И. Сатпаева, комната 334. Тел.: 291-59-38.

Адрес типографии: ИП «Аруна», г. Алматы, ул. Муратбаева, 75

E d i t o r i n c h i e f

doctor of Economics, professor, academician of NAS RK

I. K. Beisembetov

Deputy editor in chief

Zholtayev G.Zh. prof., dr. geol-min. sc.

E d i t o r i a l b o a r d:

Abakanov T.D. prof. (Kazakhstan)
Abisheva Z.S. prof., academician (Kazakhstan)
Agabekov V.Ye. academician (Belarus)
Aliyev T. prof., academician (Azerbaijan)
Bakirov A.B. prof., (Kyrgyzstan)
Bespayev Kh.A. prof. (Kazakhstan)
Bishimbayev V.K. prof., academician (Kazakhstan)
Buktukov N.S. prof., academician (Kazakhstan)
Bulat A.F. prof., academician (Ukraine)
Ganiyev I.N. prof., academician (Tadjikistan)
Gravis R.M. prof. (USA)
Yergaliev G.K. prof., academician (Kazakhstan)
Zhukov N.M. prof. (Kazakhstan)
Kozhakhmetov S.M. prof., academician (Kazakhstan)
Kontorovich A.Ye. prof., academician (Russia)
Kurskeyev A.K. prof., academician (Kazakhstan)
Kurchavov A.M. prof., (Russia)
Medeu A.R. prof., academician (Kazakhstan)
Muhamedzhanov M.A. prof., corr. member. (Kazakhstan)
Nigmatova S.A. prof. (Kazakhstan)
Ozdoyev S.M. prof., academician (Kazakhstan)
Postolatii V. prof., academician (Moldova)
Rakishev B.R. prof., academician (Kazakhstan)
Seitov N.S. prof., corr. member. (Kazakhstan)
Seitmuratova Ye.U. prof., corr. member. (Kazakhstan)
Stepanets V.G. prof., (Germany)
Humphery G.D. prof. (USA)
Steiner M. prof. (Germany)

News of the National Academy of Sciences of the Republic of Kazakhstan. Series of geology and technology sciences.

ISSN 2518-170X (Online),

ISSN 2224-5278 (Print)

Owner: RPA "National Academy of Sciences of the Republic of Kazakhstan" (Almaty)

The certificate of registration of a periodic printed publication in the Committee of information and archives of the Ministry of culture and information of the Republic of Kazakhstan N 10892-Ж, issued 30.04.2010

Periodicity: 6 times a year

Circulation: 300 copies

Editorial address: 28, Shevchenko str., of. 219, 220, Almaty, 050010, tel. 272-13-19, 272-13-18,
<http://nauka-nanrk.kz/geology-technical.kz>

© National Academy of Sciences of the Republic of Kazakhstan, 2019

Editorial address: Institute of Geological Sciences named after K.I. Satpayev
69a, Kabanbai batyr str., of. 334, Almaty, 050010, Kazakhstan, tel.: 291-59-38.

Address of printing house: ST "Aruna", 75, Muratbayev str, Almaty

NEWS

OF THE NATIONAL ACADEMY OF SCIENCES OF THE REPUBLIC OF KAZAKHSTAN

SERIES OF GEOLOGY AND TECHNICAL SCIENCES

ISSN 2224-5278

Volume 1, Number 433 (2019), 90 – 97

<https://doi.org/10.32014/2019.2518-170X.11>

UDC

D. K. Bekbergenov, G. K. Jangulova, B. K. Bektur

Mining Institute after D. A. Kunayev, Almaty, Kazakhstan.

E-mail: kdbekbergen@mail.ru

**CURRENT CONDITION AND OUTLOOKS OF SUSTAINABLE
DEVELOPMENT OF CHROMITE UNDERGROUND MINING
AT LOWER HORIZONS OF MINES OF THE DONSKOY MINING
AND PROCESSING PLANT**

Abstract. The article considers the issues of current condition and outlooks of development of underground mining of Donsk chromite mines. With the transition of mining operations to deeper levels, the geomechanical situation is getting considerably more complicated, especially for the development of stope sills that poses the need to solve the issues of developing measurements ensuring the increase in working stability. One of the most radical measures is the development of designs of artificial stope sills according to the option of development systems accepted for lower horizons of the “Ten Years of Independence” mine.

Based on the analysis of the methods for the creation of artificial stope sill on the draw and delivery level, it is proposed to develop the design with reinforced concrete stable support platform of the artificial stope sill made of concrete consolidating stowing in systems of uncontrolled block caving. At the draw and delivery level there is a bearing structure of the element of the development system that can bear extremely high mine pressure and ensure enhanced stability and reliability of transport crosscuts for the delivery of ore mass with the use of self-propelled equipment. The targeted solution of the development issue is essential at the development of chromite reserves with combined geotechnology for safe and sustainable development of underground ore mining at deep levels of deposits Millionnoye and Almaz-Zhemchuzhina of the Donskoy mining and processing plant.

Keywords: development field, technogenic collapses, underground technology, the extraction of chromium, uncontrolled caving, mass, mine technical and mining geological conditions, geomechanical conditions of the massif.

Introduction. Donskoy mining and processing plant develops chromite deposits of the South-Kempirsay massif in Western Kazakhstan, which ranks second with the reserves and is one of a kind in terms of quality, thus totally providing for the Republic’s own needs in chromite raw materials and the needs of the post-Soviet countries and exporting the ore and its concentrate to foreign countries.

At present, the main volume of ore at the Donskoy mining and processing plant is produced underground at mines “Molodezhnaya” and “Ten Years of Independence” commissioned in 2001. The “Ten Years of Independence” mine hosts 84% of chromite ore of the Donskoy mining and processing plant. Only its small part occurs at the depth of from 250 to 400 m from the surface. According to the existing classification, the major volume is located at medium (up to 600 m) and deep (from 600 to 1,500 m) levels [1-3].

Taking into account geomechanical and geotechnical particularities of mining of ore deposits at deep levels and especially ore bodies of the mines “Millionnoye” and “Almaz-Zhemchuzhina” of the mine “Ten Years Of Independence”, the important factors are the study of the mass behavior in the process of stoping, pattern of formation of caving areas, development of geomechanical processes, formation of pressure on supports of mine workings as well as the selection of the most rational process charts of ore deposits mining.

Great thickness of ore bodies of chromite deposits developed underground and weak stability of the ore mass and host rocks once determined the selection of the system of uncontrolled caving of ore and

superincumbent rock. At present, it is applied at both mines. However, the major reserves of the “Ten Years of Independence” mine occur at deeper levels than that of “Molodezhnaya” and their development is related to high pressure in less stable rocks. As mining operations go deeper in the deposits of Donsk chromites and nears 400 ÷ 600 m, the ore and rock masses with high fracturing are classified as unstable [4-6].

In these conditions, one of the significant drawbacks of the used method of technology unavoidably results in the worsening of the geomechanical situation and distribution of mine pressure in stope sills. Due to this reason, the structural elements of draw workings of the mined block are located in the zone of high (bearing) mine pressure arising and rising with the increase in the development depth and length of the stoping front. And this complicates and raises the price of maintenance and operation of the draw level [7-9].

The methods of research. In harmony with the further development of underground mining at the Kempirsay chromite deposit, there is an interest in generalization of the current condition of the chromite ore mining at the mines. For underground mining of chromite ore, the Donskoy mining and processing plant uses the technology of ore uncontrolled caving [10-12] (figure 1), which is classified as class two of the development system according to Prof. V.R. Imenitov’s classification [10].

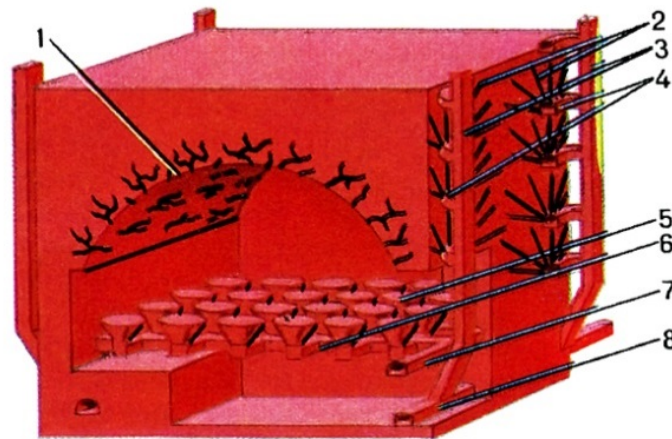


Figure 1 – Classical option of the system of ore uncontrolled block caving:
1 – Dome of the uncontrolled caving area; 2 – cutoff holes; 3 – lateral raises; 4 – drilling cuts;
5 – discharge cones; 6 – scraper drift; 7 – connecting crosscut; 8 – haulage crosscut

In spite of rather typical requirements within the technology, it provokes great interest among mining production engineers in its application due to its cheapness and simplicity since there is no need to drill holes for breaking, driving sublevels and lifting drilling and other equipment onto them. At that, it allows saving on explosives and materials, on supports of workings, ventilation and other expenses. Therefore, this technology in modern conditions remains the most appropriate and low-cost in terms of economy, efficiency and safety.

The case history of the technology at underground mines of the company *De Beers* (South Africa) revealed that the cost of mining is commensurate with the open-cast mining cost. In addition, of special interest is the practice of those working using this technology and belonging to the authors [11], as well as the description of experience of efficient operation of several foreign mining companies: diamond mines “Finch”, “Premier” and “Koffiefontein” (South Africa), copper-nickel mine “North Sparks” (Australia), copper-molybdenum mine “Henderson” of the company “Climax” (USA) and mine “El Teniente” (Chili) as well as iron deposits in Ukraine in the Krivoy Rog basin.

With the transition of mining operations to deeper levels of ore mining at “Millionnoye” mine, the KAZGIPROTCVETMET project has corrected the procedure of preparation and development of reserves of the deposits of the second order of construction at the Millionnoye and Almaz-Zhemchuzhina mines. From the border of separation of applied development systems it will be mined using the system of down-rising horizontal layers using cut-and-fill stoping and self-propelled equipment.

With regards to the development system involving uncontrolled ore caving, the KAZGIPROTCVETMET project provides for the creation of artificial (concrete) stope sill (figure 2) at the height of

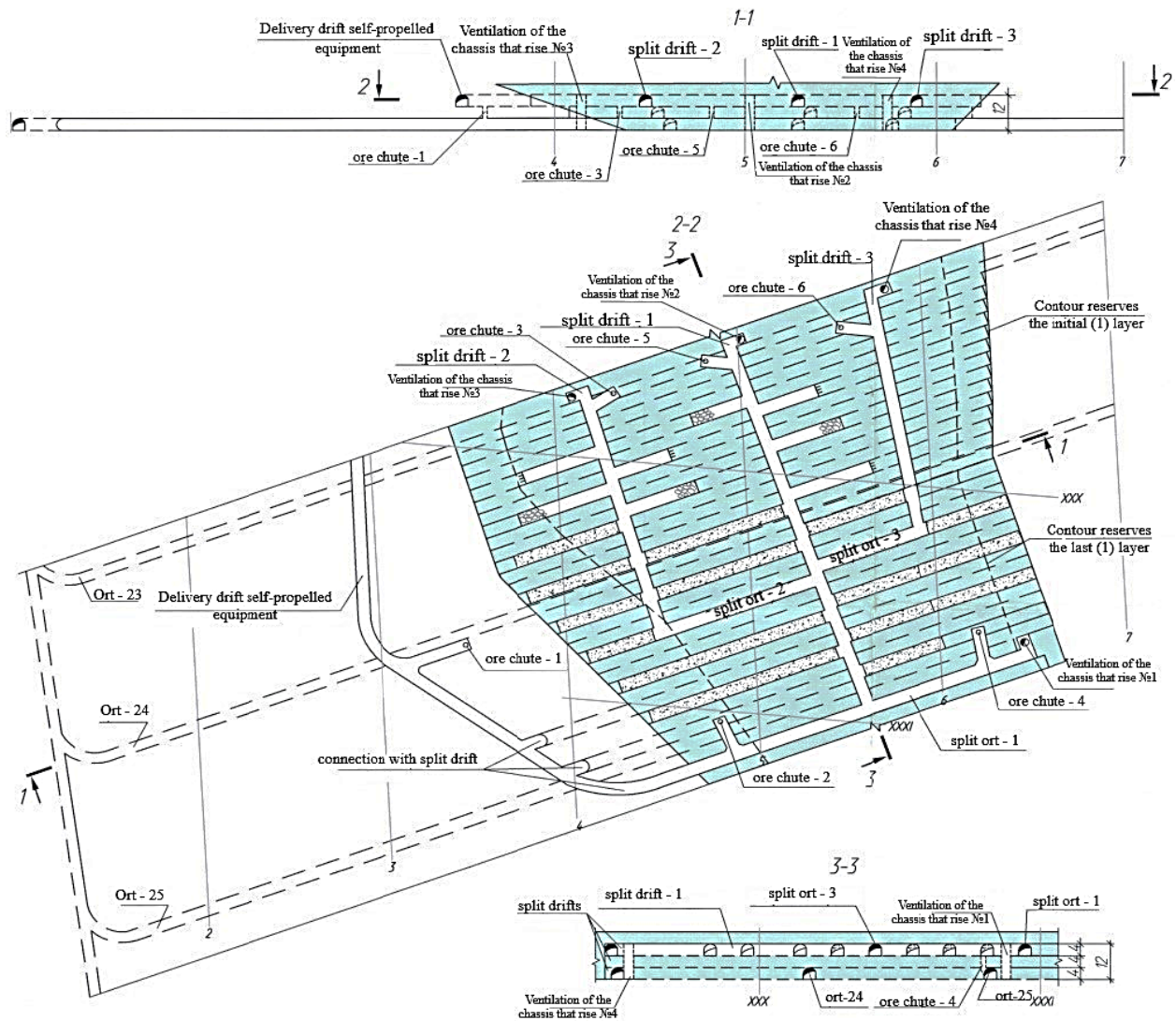


Figure 2 – System of ore block caving with artificial stope sill made of consolidating filling

12 m for the system of block caving by means of developing the reserves of the stope sill with three 4-m high filling layers. This is done with the purpose of reducing mine pressure and conserving all reserves of the block of development and face headings in the period of mining [13].

To drive and maintain development headings driven in the filling mass and to examine the strain-stress state of the filling mass and stability of headings there is very little information today related to the mining practice (at underground mines of the Arctic branch of joint-stock company “GMK” Norilskiy Nickel” in Talnakh and Ocyabr deposit) [14].

One of the perspective directions of development and improvement of process charts of preparation for blocks is allocation of development headings in the filling mass. To this end, a 1,000 m deep working was driven in the filling mass at mine 2 of the Ocyabrskiy deposit, which is around 248 m long.

The deformation process of the contour mass of the heading at the development of underworking span is progressive. And as the driving increases, the deformation intensity of contour mass of workings also rises, especially in the 50-m second zone. This is accompanied with the fracturing in the concrete. Shears at the contour of the working increase and reach around 40-50 mm. In the third zone, which is around 120 m long in the filling mass, there is a sharp displacement up to 80 and more mm at the contour of the working and in the concrete there starts a process of fracture emergence and extension, fractures of layers of the filling mass. Destruction of the filling mass come in the form of sloughing zones in the sides of the working, earth spring, slip formation in the layers of the filling mass and caving of detached con-

crete slabs. Such kinds of destructions took place mainly at the sections of the working fixed with a combined support.

There are also destructions of the working walls driven in the filling mass at the mine “Taymyrskiy” of the Arctic branch of joint-stock company “GMK” Norilskiy Nickel” [15]. The most part of destructions in the working walls driven in the filling mass were in the middle of the working wall. At that, the wall bent inward the mass, which is evident from the wooden pole the lower part of which rests against undestroyed working wall. Figure 3a shows the initial stage of destruction of the working wall. The change of the form is accompanied by the destruction of the contour part of the filling mass. The depth of the wall destruction is around 40 cm, which is seen by the length of parts of anchors protruding from the wall (anchors are 1.8 m long). Fractures are formed in the lower part of the wall which has not yet detached from the main filling mass. Figure 3b shows on a larger scale the subsequent stage of the wall destruction with a net of large and small fractures parallel to the sidewall of the working.

Figure 4a shows “final” stage of the wall destruction in the filling mass of the working driven far from junctions. If the mine technical situation changes, the destruction of the filling mass in this place of

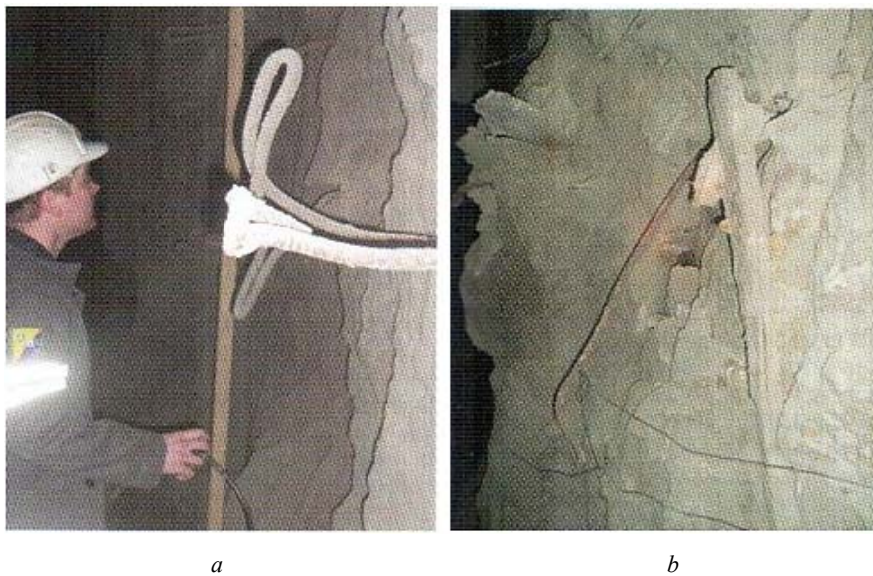


Figure 3 – Stages of destruction of the working wall driven in the filling mass:
a – Initial stage of destruction of the working wall; b – Subsequent stage of the wall destruction

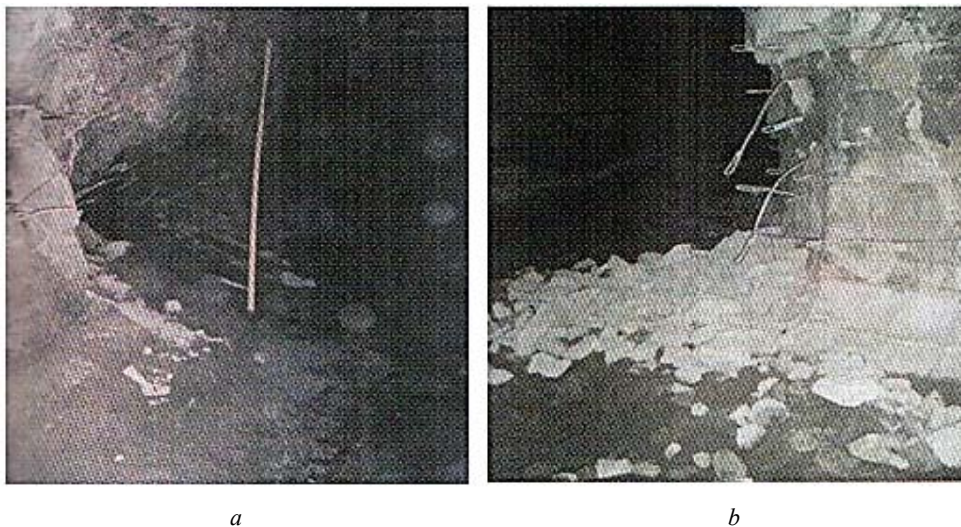


Figure 4 – Final stage of destruction of the filling mass in the wall of the working:
a – Workings driven far from the junction; b – Workings driven in the filling mass

the wall can continue. At that, the depth of the wall destruction is around 2 m, which is evident from the wooden pole set at the initial contour of the wall.

Figure 4b shows the destruction of the filling mass at the section of junctions of the mine workings along the whole contour of the wall where only the roof with the incumbent lump of the filling mass is not destroyed. Besides, it was noted that staged destruction of concrete filling took place despite the fact that this exposure was fixed with horizontally established concrete bars and is inefficient since the bars turned out to be parallel to the layering. They did not connect the layers and did not enhance the stability of the concrete scour.

Based on the above-given illustrations of destruction of the filling mass and operational practice of driving the working in the filling mass at the underground mines of “Norilsk Nickel” in the Talnakh and Otyabr deposit, at the present time it is possible to mention only just-begun scientific research and practical works.

Field of application of research results. It is necessary to note that based on the research results, the most complicated in terms of geomechanics in the system of uncontrolled ore caving is workings driven in the stope sill [16-18].

In spite of a three-layer support of scraper workings, SVP 27 (interchangeable special profile) with quite dense setup of frames has not always been reliable and stable. Therefore, in the conditions of mining at lower levels of Donskoy mining and processing plant it is necessary to go over to the creation of artificial concrete stope sill [19, 20].

Widespread development of thick fractured fields resulted in the urgent need to improve the designs of stope sills with the view of considerable enhancement of their strength characteristics, stability, able to bear high dynamic loads posed by large volumes of caved ore mass. As previously noted, conventional funnel-shaped and then trench designs of stope sills in the system of uncontrolled ore caving do not demonstrate reliable resistance to both caved mass and mounting mine pressure.

At the same time, there was a need in alternative to gravity ore drawing through funnels and draw points, which is a bottleneck in highly productive caving systems. With the purpose of intensification of ore drawing process domestic mining companies have adopted vibrating mechanisms that played positive role in the growth of mining productivity.

To tackle the issues of designing artificial concrete stope sills, the staff of the Mining Institute after D.A. Kunayev developed the design of artificial concrete stope sill [21] on a stope sill-support basis ensuring sufficient reliability, stability and operability of scraping drifts.

To illustrate the process of erection of support structural elements and subsequent analytical calculations, the major working of the stope sill was considered - scraping drift with the optimal clearance of $2_{r\delta}=2.0$ m situated at the depth of 800 m. At the first stage, in harmony with the mine technical conditions of the ore deposit development as well as thickness and accepted parameters of stopes, in particular their

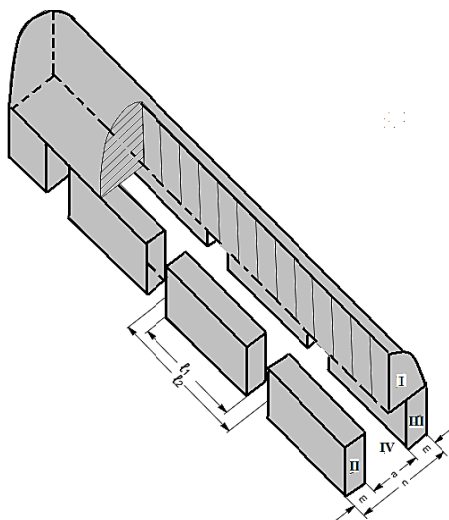


Figure 5 – Principle diagram of the concrete stope sill and sequence of its erection

height h_k , the value caved rock arch $h_{об}$ is calculated, which form the load on the support of workings in the stope sill. To this end, functional dependence $h_{об}=f(h_k)$ is used based on the relation:

Next, based on the established plastic range of stress, the advisability of erection of artificial stope sill is established using the parameter $h_{об} > 90-100$ m.

The principle diagram of the concrete stope sill and sequence of its erection are represented in figure 5 with a side cut for clarity of processes [22].

Discussion of results. At the erection of the design, at first service roadways I and II are driven stagewise for subsequent erection of support structures by means of filling the working s with concrete mixture with estimated bearing capacity. The design width of roadways I and II is accepted based on maximum probable loads (which will be mentioned later), namely $m=2$ meters or $r_B=1.0$ m. In line with table 1, specific pressure at $kH=1.0$ for this working driven at the depth of $H=800$ m in the rock mass will amount to $q_{вo}=15.9$ t/m², and for solid ore $q_{уд}=20.4$ t/m². As a result, the number of framer per running meter in the first case will equal $N_{II}=1.0$ pc/running meter, in the second case $N_{II} = 1.36$ pc/running meter. This is true in the tough operating conditions of support SVP 22 (interchangeable special profile). The need to ensure such conditions is explained by the possibility of preliminary relief of excessive pressure caused by the formation of plastic range of stress by activating the yielding units. Later, this process favorably affects the operation of concrete supports. Thus, depending on the host rock mass (ore solid and rock mass) the permissible density of installed support frames of interchangeable special profile SVP-22 is 1.5-1.0 pc/running meter.

After driving and supporting the roadway I, it is filled with concrete mixture. At that, straight arches are installed in places of design location of draw points for the formation of the cavity of required dimension. To perform subsequent analytical calculations the following parameters have been accepted: the length of one support section=5.0m, the distance between the axis of draw points = 7.0 m (figure 4.1). Operations in roadway II are performed according to the similar chart.

After completing the operations on the workings of the first and second stage and on concrete curing during 28 days, it is possible to start operation on working III (third stage) with base width $n = 6.2$ m. The calculations of the support reveals that in this case to support the working it is necessary to setup a two-layer support made of interchangeable special profile SVP-27. For rock mass – 6 pc/running meter, for ore solid - 7 pc/running meter. It is necessary to note that at this stage an experimental option is considered with maximum height of caved rocks equaling $h_{об} = 500$ m. At lesser values of $h_{об}$ within 250-300 meters, structural parameters of the stope sill significantly change. The developed methodical chart allows hands down designing of calculations for real conditions.

After erecting the support, it is necessary to thoroughly cleanse the base of the working from the sides of roadways of stages I and II, to lay metal screen and lay and fasten bars of rolled steel to improve strength of ceiling of stage IV roadway (scraping drift) and improvement of connection with bearing supports [23].

Conclusions. With the transition of mining operations to deeper levels, the geomechanical situation is getting considerably more complicated, especially for the development of stope sills that poses the need to solve the issues of developing measurements ensuring the increase in working stability. One of the most radical measures is the development of designs of artificial stope sills according to the option of development systems accepted for lower horizons of the “Ten Years of Independence” mine.

Based on the analysis of the methods for the creation of artificial stope sill on the draw and delivery level, it is proposed to develop the design with reinforced concrete stable support platform of the artificial stope sill made of concrete consolidating stowing in systems of uncontrolled block caving. At the draw and delivery level there is a bearing structure of the element of the development system that can bear extremely high mine pressure and ensure enhanced stability and reliability of transport crosscuts for the delivery of ore mass with the use of self-propelled equipment.

The targeted solution of the development issue is essential at the development of chromite reserves with combined geotechnology for safe and sustainable development of underground ore mining at deep levels of deposits Millionnoye and Almaz-Zhemchuzhina of the Donskoy mining and processing plant.

Д. К. Бекбергенов, Г. К. Жангулова, Б. Қ. Бектұр

Д. А. Қонаев атындағы Тау-кен істері институты, Алматы, Қазақстан

ДӨҢ КБК ШАХТАСЫНДАҒЫ ЖЕРАСТЫ ТАУ-КЕН ЖҰМЫСТАРЫНЫҢ ҚАЗІРГІ ЖАҒДАЙЫ МЕН ДАМУ ТҰРАҚТЫ МӘСЕЛЕСІ

Аннотация. Мақалада ДӨҢ хромитті шахтасының жерасты тау-кен жұмыстарының қазіргі жағдайы мен болашақта даму мәселесі қарастырылған. Жерасты тау-кен жұмыстарының терең деңгейликтерде горизонттарда жүргізілуіне байланысты геомеханикалық жағдай күрделене түседі, әсіресе блоктың түпкі қазбаларында, туындаған мәселелерді шешу мақсатында қазбалардың орнықтылығын арттыруды қамтамасыз ететін іс-шараларды ойластыру қажеттілігі туындайды. Ең радикалды шаралардың бірі жасанды түп қазбалы блоктың конструкциясын әзірлеу болып табылады, қабылданған қазу жүйесінің нұсқасы «Қазақстан тәуелсіздігіне он жыл» шахтасының төменгі деңгейликтеріне арналған.

Негізгі талдауға сүйене отырып, деңгейликте жасанды түп қазбалы блоктың кен шығару мен жеткізу тәсілдерін құру бойынша мәселелені шешуге бетонды-қатпалы толтырмалы темірбетонды платформалы тұрақты-тірек конструкциясын әзірлеу ұсынылады, кеннің қабатаралық өздігінен құлау жүйесінде, кен шығару мен жеткізу деңгейликіндегі қазу жүйесінің салмақ түсетін конструкциялық элемент ретінде қолданылады, өздігінен жүретін жабдықтарды қолданумен кен жеткізу кезінде, көліктік қвершлагтердің жоғары тұрақтылығы мен сенімділігін қамтамасыз етеді.

ДӨҢ шахтасының Алмаз-Жемчужина және Миллионное кенорындарының терең деңгейликтеріндегі горизонттарындағы кенді жерасты тәсілімен қауіпсіз және тұрақты өндіріп алуды даму бойынша хромит қорларын аралас геотехнологиямен пысықтауға бағытталған өзекті мәселені шешуге арналған.

Түйін сөздер: қазу жүйесі, техногендік опырылу, жерасты технологиясы, хром өндіру, өздігінен құлау, сілем, тау-кен техникасы, тау-кен геологиялық жағдай, сілемнің геомеханикалық жағдайы.

Д. К. Бекбергенов, Г. К. Жангулова, Б. К. Бектұр

Институт горного дело им. Д. А. Кунаева, Алматы, Қазақстан

СОВРЕМЕННОЕ СОСТОЯНИЕ И ПЕРСПЕКТИВЫ УСТОЙЧИВОГО РАЗВИТИЯ ПОДЗЕМНОЙ ДОБЫЧИ ХРОМИТОВ НА НИЖНИХ ГОРИЗОНТАХ ШАХТ ДОНГОКА

Abstract. В статье рассматриваются вопросы современного состояния и перспективы развития подземных горных работ шахт донских хромитов. С переходом горных работ на глубокие горизонты геомеханическая ситуация значительно осложняется, особенно для выработок днища блока, что предопределяет необходимость решения вопросов по разработке мероприятий обеспечивающих повышение устойчивости выработок. Одним из наиболее радикальных мер является разработка конструкций искусственного днища блока, по принятому варианту систем разработки для нижних горизонтов шахты «Десять лет независимости Казахстана».

На основе анализа способов по созданию на горизонте выпуска и доставки искусственного днища к решению данной проблемы предлагается разработка конструкции с устойчивоопорной железобетонной платформой искусственного днища блоков из бетонно-твердеющей закладки, при системах этажного самообрушения руды, на горизонте выпуска и доставки используется как несущая конструкция элемента системы разработки, выдерживающие экстремально высокое горное давление, обеспечивающие повышенную устойчивость и надежность транспортных қвершлагов, для доставки рудной массы с использованием самоходного оборудования. Направленное решение проблемы разработки актуально при отработке хромитовых запасов с комбинированной геотехнологией для безопасного и устойчивого развития подземной добычи руды на глубоких горизонтах месторождений Миллионное и Алмаз-Жемчужина шахты ДонГОКа.

Ключевые слова: система разработки, техногенные обрушения, подземная технология, добыча хрома, самообрушение, массив, горнорудная техника, горно-геологические условия, геомеханическое состояние массива.

Information about authors:

Bekbergenov Dossanbay, candidate of technical sciences, head of the laboratory, Integrated development of mineral resources, D. Kunaev Mining Institute, Almaty, Kazakhstan; kdbekbergen@mail.ru; <https://orcid.org/0000-0001-5946-6137>

Jangulova Gulnar, candidate of technical sciences, assistant professor, Department of Cartography and Geoinformatics, Al-Farabi Kazakh National University, Almaty, Kazakhstan; gulnarzan@gmail.com; <https://orcid.org/0000-0002-7866-1031>

Bektur Bakytbek, Master of Engineering Sciences, Lecturer of the Mining Department, Kazakhstan National Research technical University after K. Satpayev, Almaty, Kazakhstan; bekturbek@bk.ru; <https://orcid.org/0000-0003-0510-4995>

REFERENCES

- [1] Edilbaev I.B., Bitimbaev M.Zh., Zhrebko L.N., Isaev M.A. Development of the Caved Zone in the Superincumbent Rock at the Development of Ore Deposits Using the System of Uncontrolled Caving at Fields of Don Chromites. Scientific and Technical Provision of Mining Production // Collection of Proceedings of the Mining Institute after D. A. Kunayev, No 68, Part I. Almaty, 2004. P. 64-66.
- [2] Edilbaev I.B. Revival (1995-2005). Almaty, 2004. 274 p.
- [3] Development of New Highly Efficient and Safe Technologies of Underground Mining of Ferroalloy Raw Materials at Great Depth. Stage: "Development of the Operating Procedure..." // Report on R&D, subject No 15, Mining Institute after D.A. Kunayev, Almaty, 2005. 72 p.
- [4] Report on R&D "Theoretical Basics of Management of Geomechanical Condition under Pressure of Mining Operations" (final) // Head of the assignment, Doctor of engineering L. S. Shamganova, Mining Institute after D. A. Kunayev, Almaty, 2011. P. 30-35.
- [5] Vozhdaev A.V., Aimbetov M.M., Tretyak A.V. Improvement of Technological Processes of Underground Mining at Mines of the Donskoy Mining and Processing Plant // Materials of the II International Scientific and Practical Conference "Current Conditions and Outlooks of Development of Mining Branches of Industry". Rudnyi, 2004. P. 35-37.
- [6] Freidin A.M., Neverov A.A., Neverov S.A., Philippov P.A. Problems of Deposit Development at Great Depths. Novosibirsk, press of the Siberian Department of the Russian Academy of Sciences. 2008.
- [7] Guidelines on Claculation of Loads on the Support of Mine Workings in the Conditions of Mines of the Donskoy mining and processing plant. Karaganda, 2002. 44 p.
- [8] Zhrebko L.N., Dzhangulova G.K., Pivovarova L.M. Formation of Cave Roof in the Superincumbent Rock Represented by Layers of Various Thickness // Scientific and Technical Provision of Mining Production. Collection of Proceedings of the Mining Institute after D. A. Kunayev, 2008. Vol. 75. P. 18-21.
- [9] Zhrebko L.N., Dzhangulova G.K., Pivovarova L.M. Formation of Mine Pressure in the Mass Under Caved Rocks // Proceedings of the International Conference – Press of the Institute of Physics and Rock Mechanics of the National Academy of Sciences of the Kyrgyz Republic – Bishkek, 14-15 June 2006. P. 265-267.
- [10] Imenitov V.R. Processes of Underground Mining Operations at the Development of Ore Fields. M.: Nedra, 1978. 528 p.
- [11] Kuzmin E.V., Uzbekova A.R. Uncontrolled Caving of Ore at the Underground Ore Mining: Tutorial. M.: Press of the Moscow Mining University, 2006. 283 p.
- [12] Lomonosov G.G. Production Processes of Underground Development of Ore Fields: Tutorial for higher educational institutions. M.: Mining Book, 2013. 520 p.
- [13] Correction of the Project: Explanatory Note. Vol. 2, Book 3, Part – Technological Solutions (mining, mining mechanical). KAZGIPROTCVETMET. Ust-Kamenogorsk, 2011. 118 p.
- [14] Zvezdikin V.A., Smolov K.V., Nagovitsin Iu.N. Particularities of Deformation and Maintenance of Workings Driven in the Filling Mass // Mining Magazine. 2004. N 12. P. 58-60.
- [15] Habulov O.Yu. Analytical Method of Determining the Ultimate Stress Limit of the Filling Mass in the Scours of Mine Workings // Mining Magazine. 2010. N 6. P. 78-82.
- [16] Baikonurov O.A., Rykov A.T. Improvement of Stope Sills at Mines. M.: Nedra, 1977. 159 p.
- [17] Bekbergenov D.K., Dzhangulova G.K., Aimbetov M.M., Tretyak A.V., Kabdeshev A.N. Problems and Outlooks of Uncontrolled Caving Technology with Artificial Stope Sill in the Conditions of Deep Horizons of mines of the Donskoy mining and processing plant // Mining Magazine of Kazakhstan. 2014. N 3. P. 26-30.
- [18] Bekbergenov D.K., Dzhangulova G.K., Kasyghanova K.M., Toktarov A.A., Bektur B.K. Perspective Technology of Developing Ore Reserves at Kazakhstan Mines Using the System of Uncontrolled Caving // Bulletin of the RK National Academy of Sciences. Almaty, 2016. N 6. P. 109-116.
- [19] Bekbergenov D.K., Kasenov B.S., Kabdeshev A.N. Geomechanical Particularities in the Conditions of Underground Deep Mines of the Donskoy mining and processing plant // Problems and Ways of Innovative Development of Mining Industry: Materials. The Sixth International Scientific and Practical Conference. Almaty, 2013. P. 155-157.
- [20] Theoretical Basics of Management of Geomechanical Condition of the Mass at the Formation of Mine Structures and Forecast of Its Behavior under the Impact of Mining Operations // Report on R&D. Funds of the Mining Institute after D. A. Kunayev. Almaty, 2009. 95 p.
- [21] Author's Certificate No 79933 with regard to the Method of Erection of the Artificial Stope Sill at the Development of Unstable Ore Deposits at Great Depth. The authors of invention No 27669: Dzhangulova G.K., Zhrebko L.N., Pivovarova L.M. Patent holder: Branch State Enterprise Mining Institute after D. A. Kunayev of the Republican State Enterprise "National Center for Integrated Mineral Recycling" of the Committee of Industry of the Ministry of Industry and New Technologies of the Republic of Kazakhstan. (21) 2012/0241.1 (22) 27.02.2012.
- [22] Kaplunov D.R., Rylnikova M.V., Eks V.V. Major Directions and Outlooks of Development of Energy-Efficient and Environmentally Safe Geotechnologies at the Development of Fields at Great Depths // Mining Information Analytical Bulletin (Scientific Technical Magazine). 2014. N 6. P. 5-10.
- [23] Zhrebko L.N., Dzhangulova G.K., Pivovarova L.M. Development of the Design of the Stope Sill at the Development of Unstable Ore Bodies at Great Depths // Bulletin of the RK National Academy of Sciences. 2013. N 4. P.77-80.

**Publication Ethics and Publication Malpractice
in the journals of the National Academy of Sciences of the Republic of Kazakhstan**

For information on Ethics in publishing and Ethical guidelines for journal publication see <http://www.elsevier.com/publishingethics> and <http://www.elsevier.com/journal-authors/ethics>.

Submission of an article to the National Academy of Sciences of the Republic of Kazakhstan implies that the described work has not been published previously (except in the form of an abstract or as part of a published lecture or academic thesis or as an electronic preprint, see <http://www.elsevier.com/postingpolicy>), that it is not under consideration for publication elsewhere, that its publication is approved by all authors and tacitly or explicitly by the responsible authorities where the work was carried out, and that, if accepted, it will not be published elsewhere in the same form, in English or in any other language, including electronically without the written consent of the copyright-holder. In particular, translations into English of papers already published in another language are not accepted.

No other forms of scientific misconduct are allowed, such as plagiarism, falsification, fraudulent data, incorrect interpretation of other works, incorrect citations, etc. The National Academy of Sciences of the Republic of Kazakhstan follows the Code of Conduct of the Committee on Publication Ethics (COPE), and follows the COPE Flowcharts for Resolving Cases of Suspected Misconduct (http://publicationethics.org/files/u2/New_Code.pdf). To verify originality, your article may be checked by the Cross Check originality detection service <http://www.elsevier.com/editors/plagdetect>.

The authors are obliged to participate in peer review process and be ready to provide corrections, clarifications, retractions and apologies when needed. All authors of a paper should have significantly contributed to the research.

The reviewers should provide objective judgments and should point out relevant published works which are not yet cited. Reviewed articles should be treated confidentially. The reviewers will be chosen in such a way that there is no conflict of interests with respect to the research, the authors and/or the research funders.

The editors have complete responsibility and authority to reject or accept a paper, and they will only accept a paper when reasonably certain. They will preserve anonymity of reviewers and promote publication of corrections, clarifications, retractions and apologies when needed. The acceptance of a paper automatically implies the copyright transfer to the National Academy of Sciences of the Republic of Kazakhstan.

The Editorial Board of the National Academy of Sciences of the Republic of Kazakhstan will monitor and safeguard publishing ethics.

Правила оформления статьи для публикации в журнале смотреть на сайте:

[www:nauka-nanrk.kz](http://www.nauka-nanrk.kz)

ISSN 2518-170X (Online), ISSN 2224-5278 (Print)

<http://www.geolog-technical.kz/index.php/en/>

Верстка Д. Н. Калкабековой

Подписано в печать 06.02.2019.

Формат 70x881/8. Бумага офсетная. Печать – ризограф.

16,7 п.л. Тираж 300. Заказ 1.